

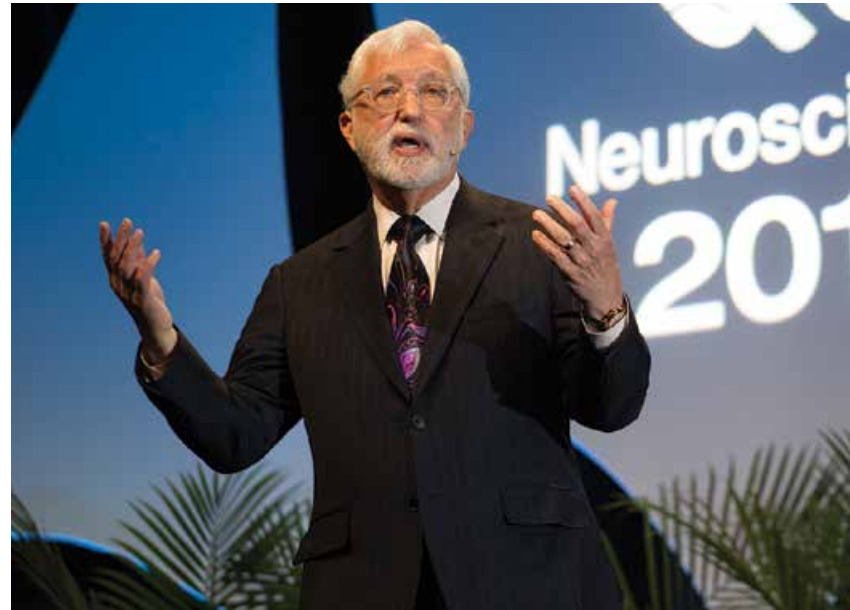
Program at a Glance

Friday, November 11	
8 a.m.–5 p.m.	NEUROBIOLOGY OF DISEASE WORKSHOP From Pediatric Encephalopathy to Alzheimer's: Linking Mitochondria to Neurological Diseases (p.24) Organizers: Giovanni Manfredi, MD, PhD; Heidi McBride, PhD
8 a.m.–6 p.m.	SHORT COURSE #2 Data Science and Data Skills for Neuroscientists (p.24) Organizers: Alyson Fletcher, PhD; Konrad Kording, PhD
8:30 a.m.–6 p.m.	SHORT COURSE #1 Using Single-Cell Genomics To Analyze Neurons, Glia, and Circuits (p.24) Organizer: Steve McCarroll, PhD
1–5:30 p.m.	SHORT COURSE #3 Record Keeping and Data Management for High-Quality Science (p.25) Organizers: Michele Basso, PhD; Katja Brose, PhD; Horacio de la Iglesia, PhD; Sabine Kastner, MD, PhD; Rae Nishi, PhD
Saturday, November 12	
8–9:15 a.m.	Meet-the-Clinician-Expert (p.25)
8–9:15 a.m.	Meet-the-Expert Series: Session 1 (p.25)
8 a.m.–5 p.m.	NeuroJobs Career Center (p.27)
9–11 a.m.	Neuroscience Departments and Programs Workshop (p.27) Organizer: Elisabeth Van Bockstaele, PhD
9–11 a.m.	Success in Academia: A Focus on Strategies for Women (p.27) Organizer: Tracy Bale, PhD
9:30–10:45 a.m.	Meet-the-Expert Series: Session 2 (p.26)
10–11 a.m.	Meeting Mobile App Tutorial (p.27)
11 a.m.–1 p.m.	DIALOGUES BETWEEN NEUROSCIENCE AND SOCIETY Global Mental Health and Neuroscience: Challenges and Opportunities (p.13) Speaker: Shekhar Saxena, MD
noon–2 p.m.	Careers in Making Medicines: Translating Basic Research Into Pharmaceutical Development (p.27) Organizer: Fiona Randall, PhD

noon–2 p.m.	Creating, Sustaining, and Enhancing Undergraduate Neuroscience Programs (p.28) Organizer: Janet Finlay, PhD
1–3 p.m.	Graduate School Fair (p.28)
1–5 p.m.	Posters/Nanosymposia
1:30–4 p.m.	Symposia/Minisymposia CME
2–3:10 p.m.	SPECIAL LECTURE Lineage Analyses of Developing CNS Tissues CME (p.14) Lecturer: Connie Cepko, PhD
3–4:30 p.m.	BRAIN AWARENESS CAMPAIGN EVENT Sharing the Magic of Brain Awareness (p.28) Speaker: Susana Martinez-Conde, PhD
3–5 p.m.	Biomedical Education and Career Options for Scientists (PhD) and Physician-Scientists (MD, PhD) (p.28) Organizer: Lique Coolen, PhD
3–5 p.m.	NIH Funding and You: A Practical Guide to Successfully Navigating Your Research Training Career (p.28) Organizer: Stephen Korn, PhD
5:15–6:25 p.m.	PRESIDENTIAL SPECIAL LECTURE Tuning Auditory Circuits for Vocal Communication CME (p.12) Speaker: Sarah M. N. Woolley, PhD
6:30–8:30 p.m.	Diversity Fellows Poster Session (p.28)
6:30–8:30 p.m.	International Fellows Poster Session (p.28)
6:30–8:30 p.m.	Trainee Professional Development Awards Poster Session (p.29)
7:30–9:30 p.m.	Career Development Topics: A Networking Event (p.29)
Sunday, November 13	
8 a.m.–noon	Posters/Nanosymposia
8 a.m.–5 p.m.	NeuroJobs Career Center (p.27)
8:30–9:40 a.m.	SPECIAL LECTURE Bitten: Understanding and Modulating Mosquito Attraction to Humans CME (p.15) Speaker: Leslie B. Vosshall, PhD
8:30–11 a.m.	Symposia/Minisymposia CME



Download the meeting mobile app for up-to-date session information



9–11 a.m.	A Guide to Publishing in Journals (p.29) Organizer: Ross Hildrew
9–11 a.m.	Stand Up and Be Heard: Navigating Career Communications (p.29) Organizer: Fiona Randall, PhD
9:30 a.m.–5 p.m.	Exhibits (p.90)
10–11:10 a.m.	SPECIAL LECTURE Dendritic Spines Shaping Memory and Behaviors CME (p.15) Speaker: Haruo Kasai, MD, PhD
11:30 a.m.–12:40 p.m.	SPECIAL LECTURE Translational Neuroepigenetic Insights of Addiction Vulnerability CME (p.15) Speaker: Yasmin L. Hurd, PhD
11:30 a.m.–1 p.m.	CHAPTERS WORKSHOP Utilizing Chapters to Teach Innovative Science to Broad Audiences (p.29) Organizers: Tanea Reed, PhD; Jennifer Yates, PhD
noon–1:30 p.m.	Successful Career Advancement Through Networking: Is It Who You Know? (p.29) Organizers: Mark Baxter, PhD; Rebecca Shansky, PhD
noon–2 p.m.	Graduate School Fair (p.28)
noon–2:15 p.m.	Path to Translation for the Inspired (p.29) Organizers: William Mobley, MD; Hao Wang, PhD
1–2:10 p.m.	SPECIAL LECTURE Circuits for Movement CME (p.14) Speaker: Silvia Arber, PhD

1–3 p.m.	SOCIAL ISSUES ROUNDTABLE Concussion: From the Players' Experience to the Future of Research (p.29) Organizer: Candace Floyd, PhD
1–5 p.m.	Posters/Nanosymposia
1:30–4 p.m.	Symposia/Minisymposia CME
2:30–3:40 p.m.	PETER AND PATRICIA GRUBER LECTURE Random Walk in Neurobiology (p.12) Speaker: Mu-ming Poo, PhD
3–5 p.m.	Meeting Expectations: NIH Review Criteria on Scientific Rigor and Reproducibility (p.30) Organizer: Cheryl Sisk, PhD
3–5 p.m.	Optimizing the Mentor-Trainee Relationship (p.30) Organizer: Lique Coolen, PhD
5:15–6:25 p.m.	PRESIDENTIAL SPECIAL LECTURE Limitations on Visual Development: Neurons and Behavior CME (p.12) Speaker: Lynne Kiorpes, PhD
6:45–8:45 p.m.	SfN-Sponsored Socials
Monday, November 14	
8 a.m.–noon	Posters/Nanosymposia
8 a.m.–5 p.m.	NeuroJobs Career Center (p.27)
8:30–9:40 a.m.	SPECIAL LECTURE Quantal Release and Its Requirements CME (p.14) Speaker: Robert Edwards, MD

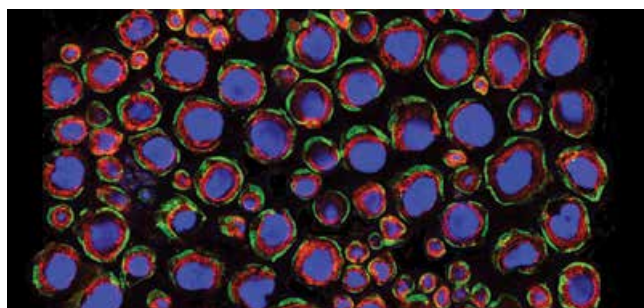
Program at a Glance

8:30–11 a.m.	CLINICAL ROUNDTABLE #1 NEW The Subcortical Source of Inflammatory Malaise CME (p.30) Organizer: Andrew H. Miller, MD
8:30–11 a.m.	Symposia/Minisymposia CME
9–11 a.m.	How to Present Science Using Visual Tools (p.30) Organizer: Scott Thompson, PhD
9–11 a.m.	Teaching Neuroscience With Big Data (p.30) Organizers: William Grisham, PhD; Richard Olivo, PhD
9:30 a.m.–5 p.m.	Exhibits (p.90)
10–11:10 a.m.	DAVID KOPF LECTURE ON NEUROETHICS Reforming Forensic Science: Some Insights From Research on Vision and Memory (p.12) Speaker: Thomas D. Albright, PhD
11:30 a.m.–12:40 p.m.	SPECIAL LECTURE Understanding Mammalian Microcircuits: Let Inspiration Guide the Way CME (p.15) Speaker: Jack L. Feldman, PhD
noon–2 p.m.	Graduate School Fair (p.28)
noon–2 p.m.	It's a Win-Win: Effectively Engaging Undergraduates in Research (p.31) Organizer: Donita Robinson, PhD
1–5 p.m.	Posters/Nanosymposia
1:30–4 p.m.	Symposia/Minisymposia CME
3:15–4:25 p.m.	ALBERT AND ELLEN GRASS LECTURE Natural Products as Probes of the Pain Pathway: From Physiology to Atomic Structure CME (p.12) Speaker: David J. Julius, PhD
5:15–6:25 p.m.	PRESIDENTIAL SPECIAL LECTURE Toward Whole-Body Connectome in <i>Drosophila</i> CME (p.12) Speaker: Ann-Shyn Chiang, PhD

6:45–8:45 p.m.	SfN-Sponsored Socials
Tuesday, November 15	
8 a.m.–noon	Posters/Nanosymposia
8 a.m.–5 p.m.	NeuroJobs Career Center (p.27)
8:30–9:40 a.m.	SPECIAL LECTURE Genetic Dissection of Sensorimotor Circuits in the Spinal Cord CME (p.14) Speaker: Martyn D. Goulding, PhD
8:30–11 a.m.	CLINICAL ROUNDTABLE #2 NEW Medications Development for Cannabis Use Disorder: CB1 Receptor Agonists, Antagonists and Signaling-Specific Inhibitors CME (p.31) Organizer: Margaret Haney, PhD
8:30–11 a.m.	Symposia/Minisymposia CME
9:30 a.m.–5 p.m.	Exhibits (p.90)
10–11:10 a.m.	SPECIAL LECTURE From Song to Synapse: Vocal Communication in Sparrows, Finches, and Mice CME (p.15) Speaker: Richard D. Mooney, PhD
10 a.m.–noon	ANIMALS IN RESEARCH PANEL How to Engage Institutions to Publicly Support Animal Research: A Top-Down Approach (p.31) Organizer: Mar Sanchez, PhD
11:30 a.m.–12:40 p.m.	SPECIAL LECTURE Clinical Neuroscience Lecture: Deciphering the Dynamics of the Unconscious Brain Under General Anesthesia CME (p.15) Speaker: Emery N. Brown, MD, PhD
noon–2 p.m.	Celebration of Women in Neuroscience Luncheon (p.31) Speaker: M. Victoria Puig, PhD
noon–2 p.m.	Graduate School Fair (p.28)
1–2:10 p.m.	SPECIAL LECTURE Cortical Circuits of Vision CME (p.14) Speaker: Massimo Scanziani, PhD



Download the meeting mobile app for up-to-date session information



1–5 p.m.	Posters/Nanosymposia
1:30–4 p.m.	Symposia/Minisymposia CME
2:30–3:40 p.m.	FRED KAVLI HISTORY OF NEUROSCIENCE LECTURE Sixty Years of Research on Neurotransmitter Release in the Light of Recent Results from the Calyx of Held Synapse (p.13) Speaker: Erwin Neher, PhD
3–5 p.m.	PUBLIC ADVOCACY FORUM Art, Music, and the Brain: How the Arts Influence Us from Youth to Maturity (p.30) Organizer: William Martin, PhD
5:15–6:25 p.m.	PRESIDENTIAL SPECIAL LECTURE Neurobiology of the Adolescent and Young Adult Brain Reveals Unique Strengths and Vulnerabilities: Debunking Myths CME (p.13) Lecturer: Frances E. Jensen, MD
6:45–7:30 p.m.	SfN Members' Business Meeting (p.31)
6:45–8:45 p.m.	SfN-Sponsored Socials
9 p.m.–midnight	Graduate Student Reception (p.31)
Wednesday, November 16	
8 a.m.–noon	Posters/Nanosymposia
8 a.m.–3 p.m.	NeuroJobs Career Center (p.27)

8:30–9:40 a.m.	SPECIAL LECTURE Regulation of Neural Stem Cell Fate During Development and in the Adult CME (p.14) Speaker: Yukiko Gotoh, PhD
8:30–11 a.m.	CLINICAL ROUNDTABLE #3 NEW Critical Topics in Pain Mechanisms and Therapeutics CME (p.31) Organizer: Timothy J. Brennan, MD, PhD
8:30–11 a.m.	Symposia/Minisymposia CME
9:30 a.m.–5 p.m.	Exhibits (p.90)
10–11:10 a.m.	SPECIAL LECTURE Postdiction and Perceptual Awareness CME (p.14) Lecturer: Shinsuke Shimojo, PhD
11:30 a.m.–12:40 p.m.	SPECIAL LECTURE The Social Brain in Human Adolescence CME (p.15) Lecturer: Sarah-Jayne Blakemore, PhD
1–2:10 p.m.	SPECIAL LECTURE Capturing Immune Responses to Understand and Treat Neurodegenerative Disease CME (p.14) Lecturer: Eliezer Masliah, MD
1–5 p.m.	Posters/Nanosymposia
1:30–4 p.m.	Symposia/Minisymposia CME