

Logo

This is template suggestion, to be used as a general guide.

Poster Title  
Authors  
Affiliation



Select one of the photography/recording icons to include on your poster. Read full policy at: [www.sfn.org/photopolicy](http://www.sfn.org/photopolicy)

Poster #

### Introduction

- Clear and concise paragraph to inform the reader of the study's background
- State the goals of the study and explain briefly why these goals are important and/or interesting

### Methods

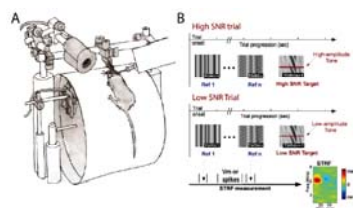
- Give sufficient detail so that an informed reader could repeat the study
- Include the species, sex, age, and other relevant features of the subjects
- Mention statistical methods and whether the study was done blind or double blind, and other efforts to enhance scientific rigor
- If the full methods cannot be presented here, consider a handout or a website link that gives the full details

### Figure

Consider introducing the logic or background of the study graphically

### Figure

Include a title that informs the results of the figure at a glance



Include a figure legend to inform the reader concerning the results; include the number of observations (animals) statistical test, significance levels, SEM or SD, Box Plots, etc.

### Figure

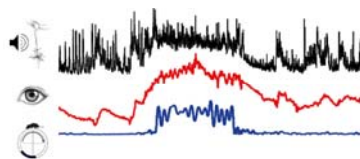
Movies add a dynamic and rich element to data presentation



Consider fixing a tablet to the poster board with pins to show a movie

### Figure

Show data upon which data analysis is based



Including raw data that illustrates the main finding is an effective way to communicate your results

### Figure

Show analyzed results in an informative format (e.g. plot)

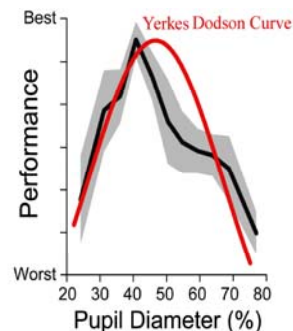
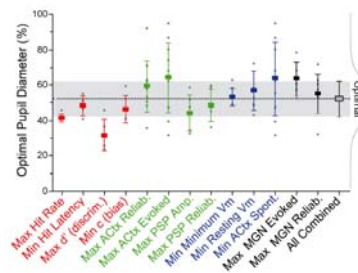


Exhibit data in an informative format such as mean and SD (or SEM) along with a mathematical fit, for example; Give n's and statistical significance and other quantitative measures

### Figure

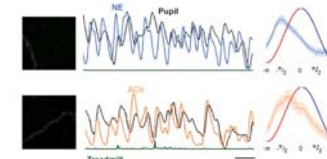
Show individual data points as well as analyzed results in the same plot



For example, if bar graphs are used, also show all data points along with the mean  $\pm$  S.D. (or SEM) or consider using other informative plotting methods such as box plots or whisker plots

### Figure

Show imaging data with both single trial examples and analyzed results



Illustrating results as both raw examples and analyzed group data helps the audience understand the finding in detail

### Figure

Show a summary scheme or illustration that brings together the main results

Explain the figure so that it is both informative and readily accessible

### Conclusions

- Visitors read these first
- Make concise statements
- Use bullet points or list points

Acknowledge funding sources