

Logo

This is template suggestion, to be used as a general guide.

Poster Title
Authors
Affiliation



Select one of the photography/recording icons to include on your poster. Read full policy at: <https://bit.ly/2VpdExV>

Poster #

Introduction

- Clear and concise paragraph to inform the reader of the study's background
- State the goals of the study and explain briefly why these goals are important and/or interesting

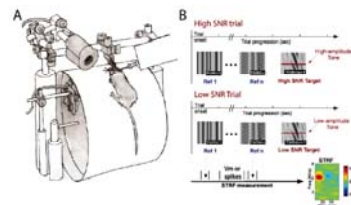
Methods

- Give sufficient detail so that an informed reader could repeat the study
- Include the species, sex, age, and other relevant features of the subjects
- Mention statistical methods and whether the study was done blind or double blind, and other efforts to enhance scientific rigor
- If the full methods cannot be presented here, consider a handout or a website link that gives the full details

Figure

Consider introducing the logic or background of the study graphically

Figure Include a title that informs the results of the figure at a glance



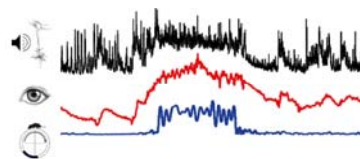
Include a figure legend to inform the reader concerning the results; include the number of observations (animals) statistical test, significance levels, SEM or SD, Box Plots, etc.

Figure Movies add a dynamic and rich element to data presentation



Consider fixing a tablet to the poster board with pins to show a movie

Figure Show data upon which data analysis is based



Including raw data that illustrates the main finding is an effective way to communicate your results

Figure Show analyzed results in an informative format (e.g. plot)

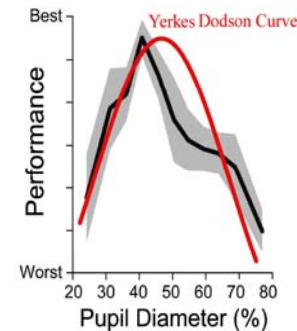
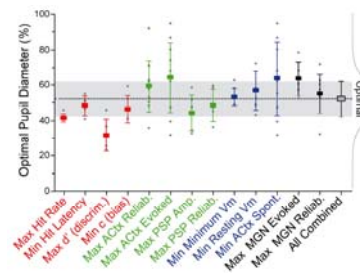


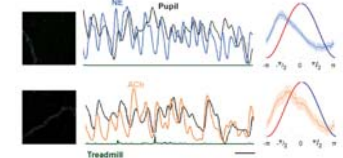
Exhibit data in an informative format such as mean and SD (or SEM) along with a mathematical fit, for example; Give n's and statistical significance and other quantitative measures

Figure Show individual data points as well as analyzed results in the same plot



For example, if bar graphs are used, also show all data points along with the mean ± S.D. (or SEM) or consider using other informative plotting methods such as box plots or whisker plots

Figure Show imaging data with both single trial examples and analyzed results



Illustrating results as both raw examples and analyzed group data helps the audience understand the finding in detail

Figure

Show a summary scheme or illustration that brings together the main results

Explain the figure so that it is both informative and readily accessible

Conclusions

- Visitors read these first
- Make concise statements
- Use bullet points or list points

Acknowledge funding sources