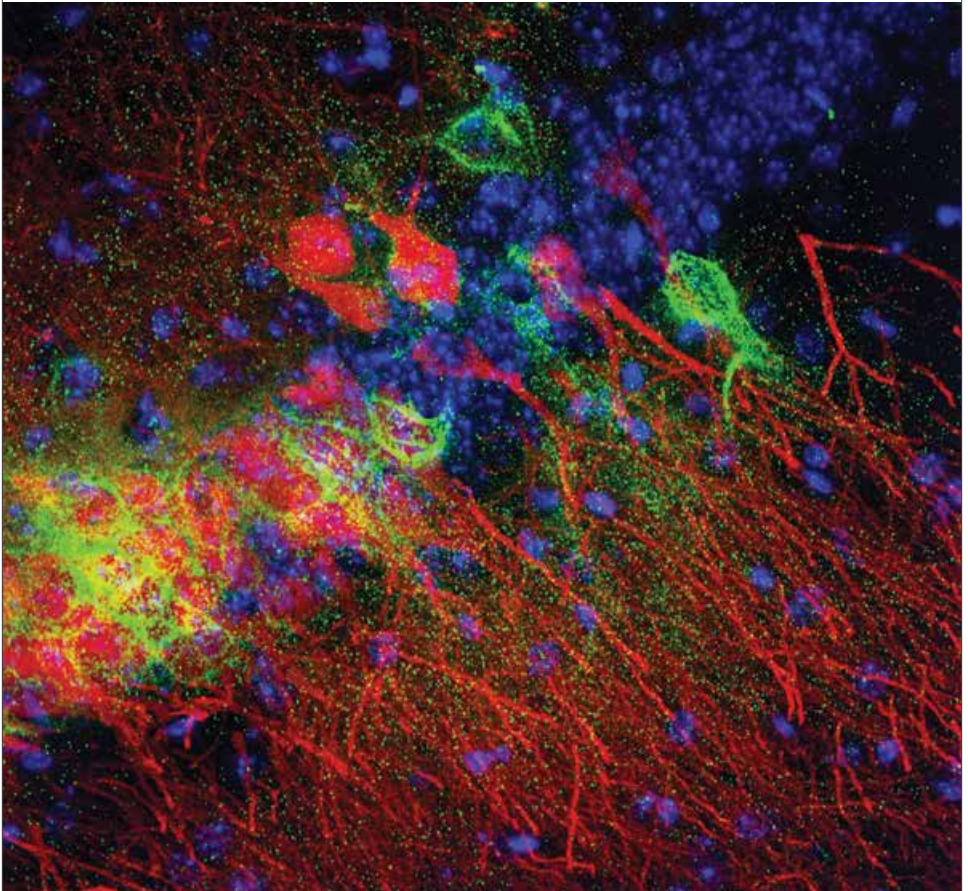




Diversity Fellows Poster Session Program

Saturday, November 11 | 6:30 p.m.–8:30 p.m. | Washington Convention Center: Hall E



Welcome to the annual SfN Diversity Poster Session

Welcome to the SfN Diversity Fellows Poster Session. This session is hosted annually to celebrate the career development of underrepresented groups in neuroscience, whose participation in the field is critical to solving problems in biomedical research.

The trainees presenting their research in this session represent a bright future for neuroscience, and in today's environment for scientific funding, professional organizations play a critical role in ensuring the continued career development of these trainees by providing opportunities for networking, mentoring, professional development, and research.

Trainees showcasing their science today have received support from the following programs:

- **Neuroscience Scholars Program (NSP):** Supported by the National Institute of Neurological Disorders and Stroke (NINDS)
- **Enhancing Neuroscience Diversity through Undergraduate Research Education Experiences (ENDURE):** Supported by the NIH Blueprint for Neuroscience Research
- **Specialized Neuroscience Research Program (SNRP):** Supported by the National Institute of Neurological Disorders and Stroke (NINDS)
- **Princeton Neuroscience Institute (PNI):** Supported by the National Institute of Neurological Disorders and Stroke (NINDS)

SfN gratefully acknowledges the financial support provided by National Institutes of Health (NIH).

The posters are organized by the following themes:

- A: Development
- B: Neural Excitability, Synapses, and Glia
- C: Neurodegenerative Disorders and Injury
- D: Sensory Systems
- E: Motor Systems
- F: Integrative Physiology and Behavior
- G: Motivation and Emotion
- H: Cognition
- I: Techniques

A: Development

BRIGETT CARVAJAL (1)

Genetic fate mapping of commissural neurons in the spinal cord
Hunter College

ENDURE

DEVIN EFFINGER (2)

Investigating the effect of neonatal IGF1 treatment on brain development in a rat model of preeclampsia
University of Colorado Denver

ENDURE

PAOLA FIGUEROA-DELGADO (3)

The role of canonical Wnt signaling pathway in regulating neuron morphology
University of Puerto Rico–Rio Piedras

ENDURE

D'NEA GALBRAITH (4)

The effects of early life stress on medial preoptic area development
Hunter College

ENDURE

RUBEN GARCIA (5)

Pathogenesis of intellectual disability: Regulation of PHF6 in excitatory synapse development
Metropolitan University, Cupey

ENDURE

MARIA GONZALEZ (6)

TAp63 overexpression mitigates sexually dimorphic proliferation in mesenchymal glioblastoma astrocytes
University of Puerto Rico–Cayey

ENDURE

FABRIA JNO. BAPTISTE (7)

Expression localization & functional role of NavB
University of Maryland, Baltimore County
ENDURE

MELANIE LOLIER (8)

Exposure to a synthetic progestin reduces dopaminergic innervation of hippocampus in a sex-specific manner in neonates
University at Albany
NSP

ZAKIA LOWERY (9)

Effects of the expression of Foxp2 in corticothalamic neurons on cortical development
Tennessee State University
ENDURE

BRITTANY MAYWEATHER (10)

Investigating the role of Growth Differentiation Factor 11 (GDF11) in adult neurogenesis
Harvard University
NSP

GOLDIE ANN MCQUAID (11)

Resting-state functional connectivity between language and emotion regions in autism spectrum disorder
Georgetown University
NSP

JOANNA MEDINA (12)

Colocalization of progesterone receptor-ir and BDNF-ir within the somatosensory cortex of postnatal rats
University at Albany
NSP

MIKAELA NEAL (13)

Differential regulation of glutathione in oligodendrocyte development
University of Colorado Denver
ENDURE

COURTNEY NEWMAN (14)

Less tissue organization in white matter suggests more typical socialization
Tennessee State University

ENDURE

AMARACHI OLERU (15)

Determining the relevance of the MHCI cytoplasmic domain residue S327 for binding to spinophilin
Cameron University

PNI

JORDAN PEYER (16)

MicroRNA-based reprogramming of human adult fibroblasts into dopaminergic neurons
Vassar College

ENDURE

SHAKIRA RODRIGUEZ-GONZALEZ (17)

Role of the gut microbiome on the ontogenesis of the enteric nervous system
University of Puerto Rico at Cayey

ENDURE

KAELA SINGLETON (18)

Pairing your Sox: Cross species function of Sox11 in neural development
Georgetown University

NSP

CATHERINE UBRI (19)

Inclusive peer environments remediate social behavioral disturbances following early-life stress rearing
Hunter College

ENDURE

B: Neural Excitability, Synapses, and Glia

STEPHEN ALKINS (20)

The Long 3'UTR mRNA of CaMKII Drives Miniplasticity in *Drosophila melanogaster*
Brandeis University

NSP

MICHELLE ANTOINE (21)

Altered excitatory-inhibitory ratio preserves circuit excitability in FMR1, CNTNAP2, 16p11.2 deletion, and Tsc2 mouse models of autism
University of California, Berkeley

NSP

DAVID BATTLE (22)

Dendritic spine analysis of striatal spiny projection neurons in the mouse model of Fragile X Syndrome
Tennessee State University

ENDURE

CLAIRE CHEN (23)

Self-Scission of the CPEB3 ribozyme is activity-dependent and may regulate expression of the CPEB3 mRNA
University of California, Irvine

NSP

YOLIMAR COLÓN-LÓPEZ (24)

Effects of acute MeHg-induced calcium changes in the Renshaw region of the C57BL6J mouse
Pontifical Catholica University, PR

ENDURE

ANA DEFENDINI (25)

Activation of oxytocin target neurons after social interaction of female rats
University of Puerto Rico–Rio Piedras

ENDURE

JARY DELGADO (26)

Pin1 regulates PSD-95 ubiquitination and its stability at excitatory synapses
The University of Chicago

NSP

TAVITA GARRETT (27)

Subtype identification of unipolar brush cells in the P079 enhancer trap mouse line
Oregon Health and Science University

NSP

OLIVIA GAUTIER (28)

mGluR5 is functional at the cell surface and at intracellular membranes in cortical astrocytes
MIT

ENDURE

ANDREA GOMEZ (29)

Functional mapping of a synaptic adhesive code in neurons
Biozentrum, University of Basel

NSP

ROMINA GONZALEZ PONS (30)

Role of inhibitory and excitatory receptors in mediating calcium changes during an acute MeHg exposure on the C57Bl6J mouse
University of Puerto Rico at Cayey

ENDURE

MARISSA HANSEN (31)

Investigating biased Arrestin-3 recruitment to Nociceptin/Orphanin FQ Opioid Receptor (NOPR)
University of Texas at Austin

ENDURE

AURELIA MAPPS (32)

Functional & genetic comparison of sensory & sympathetic satellite glial cells
Johns Hopkins University

NSP

MONIQUE MENDES (33)

Microglial contributions to network remodeling in adult ocular dominance plasticity
University of Rochester

NSP

PAIGE MIRANDA (34)

Metabolic processes underlying Hebbian hippocampal long term potentiation
Yale University

NSP

KERRI PRYCE (35)

The scaffold protein Magi-1 regulates voltage-dependent sodium channels in dorsal root ganglion neurons
State University of New York at Buffalo

NSP

T'AIR RIGGINS (36)

Determining the elastic moduli of normal and cancerous brain to develop a 3D culture mimic
Purdue University

NSP

NICOLE RIVERA (37)

Cytotoxicity through L-type and the N-type voltage-gated calcium channels after an acute exposure of methylmercury on primary cerebellar astrocytes
Pontifical Catholic University of Puerto Rico

ENDURE

DAVID TYUS (38)

The effect of KATP channel mutations on inhibitor sensitivity: Implications for personalized treatment of Cantu syndrome
Washington University in St. Louis

ENDURE

KATHERINE VARELA (39)

Homeostatic regulation of Tomosyn-1 expression in presynaptic terminals
Hunter College

ENDURE

CORY WHITE (40)

Ethanolamine phosphate phospholyase in astrocyte lipid metabolism
Johns Hopkins School of Medicine

NSP

BRITTANY WILLIAMS (41)

A novel form of Cav1.4 Ca²⁺ channel regulation revealed by alternative splicing and a mutation causing congenital stationary night blindness
University of Iowa

NSP

C: Neurodegenerative Disorders and Injury

CHINYERE AGBAEGBU IWEKA (42)

Plasticity-related gene protein type 3 modulates neurite outgrowth inhibition through the RhoA-ROCK pathway
Georgetown University

NSP

MITCHELL BARTLETT (43)

AAV2/1 VEGFB overexpression improves motor function in PINK1 gene KO rats and prevents dopamine loss
University of Arizona College of Medicine

NSP

CHRIS BOLDEN (44)

Testing anti-methamphetamine gene therapy on reducing neuroinflammation
University of Arkansas for Medical Sciences

NSP

JOSEPH BRADLEY (45)

Identification of Blood eQTLs for AD risk loci
Harris-Stowe State University

ENDURE

JAKEIRA DAVIS (46)

Amyloid β -peptide as a modulator of the insulin receptor at the blood brain barrier
University of Arkansas for Medical Sciences

NSP

RODRIGO DE LA TORRE (47)

Characterizing p62 pathology in SCA3 disease-specific human embryonic stem cells
New York University

ENDURE

JASMIN A. EATMAN (48)

Assessment of combinational metal induced neurotoxicity in vitro
Morehouse School of Medicine

SNRP

STEPHEN HERNANDEZ (49)

How mTOR regulates tight junction proteins in Alzheimer's disease
University of Texas Health Center at San Antonio

ENDURE

ERICA LITTLEJOHN (50)

Insulin-like growth factor-1 overexpression enhances neurogenesis and activates the mTOR pathway after moderate TBI
University of Kentucky

NSP

ESTEBAN LUNA (51)

Differential vulnerability to pathological α -synuclein seeding in hippocampal neuron subpopulations
Perelman School of Medicine at the University of Pennsylvania

NSP

CHELSEA MACKAY (52)

A characterization of amyloid pathology and circadian system function in APP-NLGF mice
University of Missouri–Columbia

ENDURE

LUIS MARTINEZ-VELAZQUEZ (53)

Antagonistic regulation of trafficking to C. elegans sensory cilia by a Retinal Degeneration 3 homolog and retromer
New York University School of Medicine

NSP

SACHA MCELLIGOTT (54)

Characterizing mechanisms of debris Clearance and changes in global protein synthesis after axonal injury
New York University

ENDURE

ITZIK NAHMOUD (55)

Identification of surrogate markers for malignant cell types in anaplastic astrocytomas
Hunter College

ENDURE

DERRICK OGOLA (56)

Synaptic dependent amyloid- β generation in vivo in Alzheimer's disease mouse model
Washington University in St. Louis

ENDURE

TAYLOR REID (57)

Assessing the relationships between blood makers and executive memory brain regions in HIV+ patients
Washington University

ENDURE

KIMBERLY RIVERA-CARABALLO (58)

The expression of excitatory amino acid Transporter 1 and 2 mRNA during methylmercury exposure in spinal cord astrocytes
University of Puerto Rico–Humacao

ENDURE

KATHRYN SANCHEZ (59)

Characterizing misfolded A53T synuclein and its role in microglial activation
Georgetown University

NSP

MICHAEL SANGOBOWALE (60)

Longitudinal assessment of cerebrovascular dysfunction after traumatic brain injury using functional near-infrared spectroscopy
University of Pennsylvania

NSP

LEEZA SANTIAGO MILLAN (61)

Expression of neurotrophic factor genes in motor neurons of mouse models of spinal bulbar muscular atrophy
University of Puerto Rico–Humacao

ENDURE

JORDY SEPULVEDA (62)

BDNF and select ion transporters altered after manganese exposure: a mouse model of Huntington's disease
Hunter College

ENDURE

MIKAELA SIFUENTES (63)

Sex differences in stroke neuroprotection via stimulation of FAO
University of Texas Health Science Center at San Antonio

NSP

NICHOLAS SILVA (64)

Mmp-9 regulates photoreceptor regeneration in the retina of the zebrafish
University of Michigan

NSP

MUYU SITU (65)

Searching for locomotion defects in a *C. elegans* model of Amyotrophic lateral sclerosis
Hunter College

ENDURE

JORDAN SPENCER (66)

Are vocal tics in Tourette's speech-like?
Tennessee State University

ENDURE

ASHLEY TAYLOR (67)

Satellite glial cells may influence dorsal root ganglia response to injury
University of Missouri–St. Louis

ENDURE

SAMANI UPADHYAY (68)

Plasma Aβ isoform profile and its implications on early Alzheimer's diagnosis
Brown University

ENDURE

GRACE WILLIAMS (69)

Recently discovered α-7/β-2 nicotinic acetylcholine receptor may have role in amyloid-β pathology in Alzheimer's disease
Louisiana Tech University

NSP

MALANEY YOUNG (70)

Minimal nucleation state of α-synuclein is stabilized by dynamic threonine–water networks
University of Minnesota

NSP

D: Sensory Systems

LELAND FLEMING (71)

Increased use of peripheral vision is associated with increased functional connectivity between peripheral V1 and functionally specialized visual areas
University of Alabama at Birmingham

NSP

KELCIE GERRY (72)

Effect of fractionated irradiation on Wnt/β-catenin signaling in mouse circumvallate papilla
New Mexico State University

ENDURE

JOSE GRAJALES (73)

Analysis of the role of glutamatergic and GABAergic periaqueductal gray (PAG) neuronal subpopulations in a mouse model of persistent inflammatory pain
Washington University School of Medicine

NSP

BIANCA MASON (74)

Vascular contributions of peripheral CGRP in migraine-like photophobia
University of Iowa

NSP

FRANCISCO RODRIGUEZ (75)

Spiking activity in auditory cortex to identity-preserving changes in sounds
University of Pennsylvania School of Medicine

NSP

CELINA SALCIDO (76)

The impact of inflammatory pain on decision-making
The University of Texas at Arlington

NSP

SIMON SANCHEZ (77)

Evaluation of repellent activities of two essential oils norcamphor and thujone in two *Drosophila* species
St. Mary's University

ENDURE

E: Motor Systems

DARIL BROWN (78)

Classification of naturalistic birdsong vocalizations
University of California, San Diego

NSP

RYAN NORTH (79)

The influence of feedback type on the temporal stability of motor adaptation and generalization
George Mason University

NSP

DANIEL POWELL (80)

Modulation of the pyrokinin-elicited gastric mill rhythm by an endogenous peptide hormone and a mechanosensory neuron
Brandeis University

NSP

F: Integrative Physiology and Behavior

SHANTEE AYALA ROSARIO (81)

Investigation of inflammatory responses in the ventral tegmental area in mouse models of depression
Inter American University of Puerto Rico

ENDURE

ABDIAS DIAZ (82)

Effects of early-life morphine exposure on response to cocaine in adulthood
University of Puerto Rico

ENDURE

VICTORIA ENCARNACION (83)

Hyperpolarization-activated cation current (I_h) channel subunit HCN2: role on the development and expression of cocaine behavioral sensitization
University of Puerto Rico Rio Piedras

ENDURE

JAZZ FIELDS (84)

Probing the role of the medial prefrontal cortex in female sex behavior
Tennessee State University

ENDURE

MARCELO FRANCIA (85)

The effect of chronic sleep deprivation in the expression of Bruchpilot
University of Puerto Rico Rio Piedras Campus

ENDURE

KASEY GIRVEN (86)

Insula drive to the extended amygdala modulates reward-related behavior
University of Maryland, Baltimore Graduate School

NSP

JORGE IRAVEDRA (87)

Interrogating inputs to rostral prelimbic prefrontal cortex that drive inhibitory responses necessary for active avoidance
Universidad de Puerto Rico

ENDURE

IDRIS KOSOKO (88)

Effects of physical activity and sedentary behavior on brain responses to high-calorie food cues in obese and lean young adults
Tennessee State University

ENDURE

ELYSE LANG (89)

Identification of iso-preferred reinforcers for use in an instrumental reward devaluation task
Tennessee State University

ENDURE

KRISSY LYON (90)

Modulation of behavior by dopamine receptor-expressing serotonergic neurons
Harvard Medical School

NSP

KARINA MATOS (91)

Early-life stress alters the development and neural regulation of nutrient transport in porcine small intestine
University of Puerto Rico–Ponce

ENDURE

LAVERNE MELÓN (92)

Role of tonic inhibition in the basolateral amygdala in the maintenance and consequences of binge drinking
Tufts University School of Medicine

NSP

CAILEE NELSON (93)

3D printing of EEG cap for socially assistive robot development
New Mexico State University

ENDURE

ODOCHI NWOKO (94)

Methamphetamine exposure and withdrawal impact gut microbiota in rats
University of Houston

NSP

DAVID OJEDA (95)

Using immunohistochemistry and western blotting protocols for ASIC1A protein identification
University of Puerto Rico, Rio Piedras Campus

ENDURE

LONI PARRISH (96)

Behavioral difference in sham mice and mice that have received traumatic brain injury
Tennessee State University

ENDURE

RAUL RAMOS (97)

From molecules to behavior: examining the role of homeostatic plasticity in learning & memory
Brandeis University

NSP

YAMILKA RIOS (98)

The electrochemical detection of peroxynitrite using chemically modified diamond electrodes
University of Puerto Rico

ENDURE

RAYMOND SANCHEZ (99)

Jet lag induces a transient misalignment in the circadian timing of sleep stages in the mouse
University of Washington

NSP

MARCOS SANCHEZ-NAVARRO (100)

Avoidance over-conditioning impairs extinction of fear, induces persistent avoidance, and increases use of safety cues: implications for OCD

Universidad Metropolitana

ENDURE

DANIEL TOBIANSKY (101)

Maternal sucrose consumption has long-term effects on male offspring behavior in rats: a possible role for neurosteroids

The University of British Columbia

NSP

RICARDO TORRES-RAMÍREZ (102)

Isolation during adolescence increases CPP to cocaine in male rats

Inter American University

ENDURE

PUJA TRIVEDI (103)

Using variational autoencoders to generate postural manifolds for animal behavior

University of Maryland, Baltimore County

PNI

ANDRE WALCOTT (104)

Female partner's drinking status influences the maintenance of monogamous pair bonds in male prairie voles

Oregon Health and Science University

NSP

ANTONIO WHITE (105)

Activation of mTORC 2 signaling protects against kidney damage in high fat fed Dahl salt sensitive hypertensive rats

North Carolina Central University

ENDURE

G: Motivation and Emotion

B. SOFIA BEAS (106)

Inhibitory control of a thalamic stress circuit

National Institute of Mental Health

NSP

ABRAHAM ESCOBEDO (107)

Ketamine inhibits methamphetamine-induced ultrasonic vocalizations and locomotor activity in rats

Purdue University

NSP

DANIELA FRANCO (108)

SB224289, a 5-HT1B receptor antagonist, decreases the aversion of nicotine in male, but not female adolescent rats

California State University, Long Beach

NSP

KATHERINE FURMAN (109)

Sex-differences in the effect of estradiol on cocaine-induced dopamine release: Role of selective estrogen receptors

New York University

ENDURE

SOFIA LOPEZ (110)

Assessment of the corticosterone profile and anxiety-related behaviors in sign-trackers and goal-trackers

University of Michigan

NSP

JULIA MEADE (111)

Molecular and behavioral mechanisms mediating paclitaxel-induced changes in affect-like behavior in mice

Virginia Commonwealth University

NSP

NATALIE NEVÁREZ (112)

Dopamine autoreceptor adaptations underlie increases in stimulated dopamine release in pair bonded prairie voles

The University of Michigan

NSP

MAKENZIE NORRIS (113)

Potential role for central amygdala dynorphin neurons in affective behaviors

Purdue University

ENDURE

SYDNEY O'NEAL (114)

Anatomical study of the afferents to the dorsal and ventral nucleus accumbens shell

Tulane University

ENDURE

LAURA QUINONES-CAMACHO (115)

Neurophysiological correlates of discrete emotion processing

University of California, Riverside

NSP

CINDY REYES (116)

Exploring the mechanism by which optogenetic stimulation of ventral tegmental area dopamine neurons prevents extinction of cued approach behavior

Albert Einstein College of Medicine

NSP

EFRAIN J. RODRIGUEZ SIERRA (117)

Nandrolone increases conditioned place preference to cocaine in female and male rats

University of Puerto Rico, Rio Piedras

ENDURE

MARIAN T. SEPULVEDA-ORENGO (118)

Cocaine self-administration and extinction induces adaptations in NMDA receptor-mediated currents in the nucleus accumbens core

University of North Carolina, Chapel Hill

NSP

CIEARRA SMITH (119)

The physiological relevance of $\alpha 3$ -containing nAChRs in nicotine-mediated behaviors

University of Massachusetts Medical School

NSP

RAPHEAL WILLIAMS (120)

Chronic stress effects on economic decision-making

University of Washington, Seattle

NSP

KATIE YOEST (121)

Regulation of food reward by female gonadal hormones

University of Michigan

NSP

H: Cognition

SIKOYA ASHBURN (122)

The cerebellum's involvement in reading

Georgetown University

NSP

LAUREN BERGER (123)

Neural networks for tactile language processing
Gallaudet University
NSP

EDITH BRIGNONI-PEREZ (124)

Behavior-functional connectivity relationship in bilinguals and monolinguals: revisiting the brain system for reading
Georgetown University
NSP

YA'EL COURTNEY (125)

The influence of genetics on individual differences in neural activation patterns
Kent State University
ENDURE

GISELLA DIAZ (126)

Tracking the contents of working memory using oscillatory and event-related slow wave activity
University of Chicago
NSP

KEITH DOELLING (127)

Synchronizing to the note: modeling oscillatory dynamics in auditory cortex to track the note rate of music
New York University
NSP

AMBER JOHNSON (128)

Over-expressed Neuregulin1-IV and its affect on transgenic mice learning an associative task
University of Colorado Denver
ENDURE

JASMINE KWASA (129)

Individual differences in selective and divided attention to complimentary auditory and visual tasks
Boston University
NSP

GLORIA LEE (130)

Selective loss of dopamine D2 receptors in GABAergic interneurons modifies cerebral cortical architecture and motor behaviors
Florida State University College of Medicine
NSP

CHRISTOPHER MEDINA-KIRCHNER (131)

Repeated 3,4-methylenedioxymethamphetamine (MDMA) administration in humans: physiological and neurocognitive effects
Columbia University
NSP

ASHLEA MORGAN (132)

Early-life serotonin transporter blockade blunts adult serotonergic enhancement of hippocampal memory
Columbia University
NSP

JULIA PAI (133)

Primate ventral pallidum neurons are sensitive to the timing of uncertainty-resolving information
New York University
ENDURE

ENMANUELLE PARDILLA-DELGADO (134)

Dream reporting supports gist-based (false) memory processing
MGH/Harvard Medical School
NSP

GIANNA PEREZ (135)

Measuring the role of competition between memories after reactivation during sleep
Villanova University
PNI

MARCO PIPOLY (136)

Variations in grey and white matter volume in relation to impulsivity in healthy adults
University of Missouri–St. Louis

ENDURE

CARISSA ROMERO (137)

The real deal: willingness-to-pay and satiety expectations are greater for real foods versus their images
University of Nevada, Reno

NSP

LILLIANA SANCHEZ (138)

The effects of moderate prenatal alcohol exposure on object place paired associate performance in the rat
The University of New Mexico

NSP

ALEC SEIDENBERG (139)

Intrinsic BNST function in post-traumatic stress disorder
Hunter College

ENDURE

SHAWNIQUA WILLIAMS (140)

Spatiotemporal neuronal activation patterns during verbal fluency tasks
University of Pennsylvania

NSP

MARK ZIELINSKI (141)

Sequential activity during hippocampal theta supports distinct prefrontal representations
Brandeis University

NSP

I: Techniques

ABRAHAM BEYENE (142)

Near-infrared nanosensors for brain imaging of modulatory neurotransmitters
University of California, Berkeley

NSP

LUZ MILBETH CUMBA GARCIA (143)

Optimized isolation of plasma extracellular vesicles for use as potential biomarkers in patients with glioblastoma
Mayo Clinic Graduate School of Biomedical Sciences

NSP

SHALONDA INGRAM (144)

Comparative proteomics analysis of dopamine transporter interactome upon methamphetamine and cocaine treatment
Meharry Medical College

NSP

DANIELLE PORTER (145)

Simultaneous visualization of all three KNDy peptide mRNAs in the same neurons of the ovine arcuate nucleus
University of Mississippi Medical Center

NSP

CARLOS RODRIGUEZ (146)

Effects of chronic olanzapine exposure on functional network connectivity in the anesthetized rat
University of New Mexico

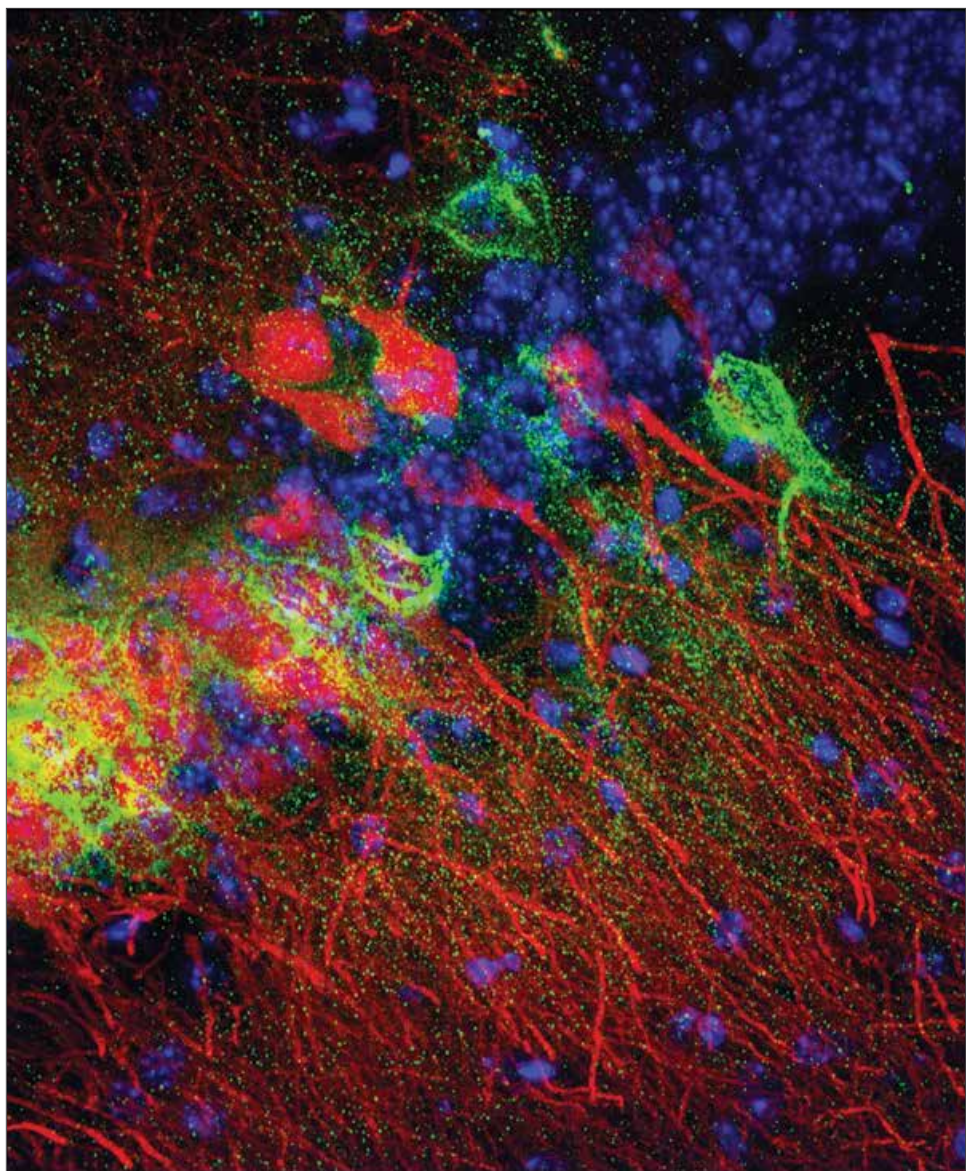
NSP

TANYA VICTOR (147)

Cannabidiol as a potential effector of epileptogenesis through microglial modulation
Stony Brook University

NSP

NOTES



SOCIETY *for*
NEUROSCIENCE

1121 14th Street NW, Suite 1010
Washington, DC 20005
SfN.org