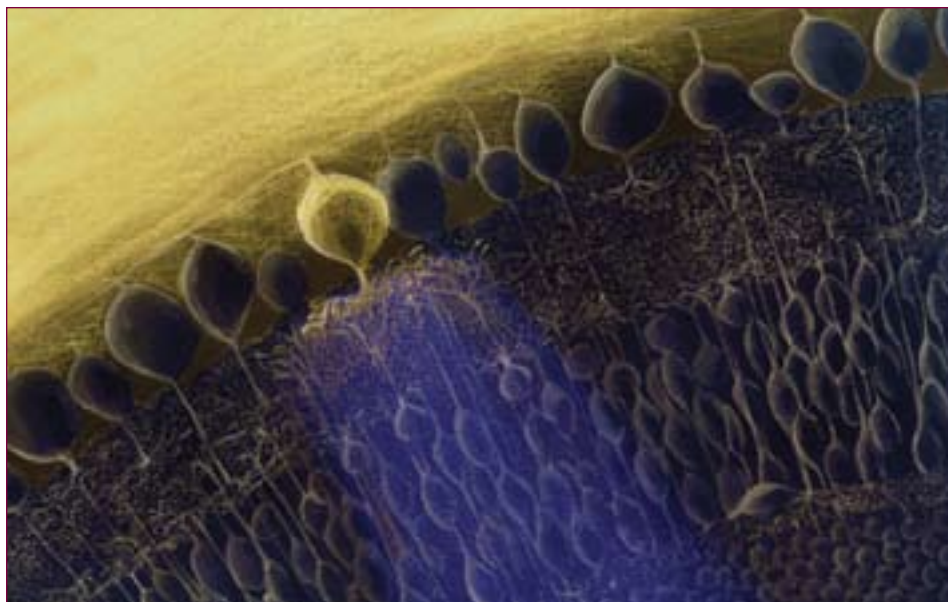


Satellite Events

Please visit us at www.sfn.org/satellites for more information



WEDNESDAY, OCT. 31 — FRIDAY, NOV. 2

17th Neuropharmacology Conference: Cannabinoid Signaling in the Nervous System

Hilton San Diego Resort
Wednesday, Oct. 31
Noon – 8 p.m.

Thursday, Nov. 1
9:30 a.m. – 8 p.m.

Friday, Nov. 2
9:30 a.m. – 5 p.m.

Chair: Daniele Piomelli, University
of California at Irvine

Speakers: Brad Alger, Pablo Castillo, Mark Connor, Ben Cravatt, Fernando R. de Fonseca, Vincenzo Di Marzo, Gilberto Fisone, Tamas Freund, Steve Goldberg, Manuel Guzman, Cecilia Hillard, Andrea Hohmann, Masanobu Kano, Istvan Katona, George Kunos, Aron Lichtman, David Lovinger, Beat Lutz, Mauro Maccarrone, Ken Mackie, Phil Malan, Rafael Maldonado, Olivier Manzoni, Raphael Mechoulam, Daniela Parolaro, Wade Regehr, Ivan Soltesz, Nephi Stella, Natsuo Ueda, Chris Vaughan

This 17th Neuropharmacology Conference brings together international experts from a broad spectrum of disciplines to share the latest advances in the biochemistry, neurobiology, and pharmacology of the endocannabinoid signaling system in the brain.

CONTACT:

JESSICA STEWARD
Phone: (44-18) 6584-3095
Fax: (44-18) 6584-3958
E-mail: j.steward@elsevier.com
Web site: www.neuropharmacology-conference.elsevier.com

6th International Symposia on the CGRP Family

Torrey Pines Hilton Hotel
Wednesday, Oct. 31
4 – 10 p.m.

Thursday, Nov. 1 — Friday, Nov. 2
8 a.m. – 10 p.m.

With an emerging role in pain, feeding, migraine, and hypertension, the CGRP family of peptides is becoming a target for therapeutic intervention. This family includes CGRP, adrenomedullin, amylin, intermedin, and calcitonin. The focus of this symposium will be on the physiologic roles of the CGRP family of peptides, and the biochemical interplay of their receptor proteins that govern the efficacy of peptide actions.

For additional information, please visit www.urmc.rochester.edu/smd/cgrp/?event=show=home.

CONTACT:

ANDREW RUSSO, PhD
Phone: (319) 335-7872
Fax: (319) 335-7330
E-mail: andrew-russo@uiowa.edu
Web site: www.physiology.uiowa.edu/faculty/faculty/rucco.htm
IAN DICKERSON, PhD
Phone: (585) 273-1040
E-mail: ian_dickerson@urmc.rochester.edu

Nicotinic Acetylcholine Receptors as Therapeutic Targets: Emerging Frontiers in Basic Research and Clinical Science

San Diego Convention Center,
Symposium 30E, Poster Session 31C
Wednesday, Oct. 31
6 – 9 p.m.

Thursday, Nov. 1
8 a.m. – 9 p.m.

Friday, Nov. 2
8 a.m. – 8 p.m.

The field of nicotinic acetylcholine receptors (nAChRs) has advanced considerably over the past decade in terms of both basic research and clinical science. Concurrent with the increased understanding of receptor biology, ligands targeting distinct receptor/subunit combinations have emerged with potential for treating diseases of unmet medical need. This meeting aims to synthesize basic science and clinical advances, to analyze latest breakthrough findings in the elucidation of receptor biology, and to define avenues and targets for novel drug discovery and development in areas such as Alzheimer's disease, schizophrenia, pain, ADHD, depression, Parkinson's disease, smoking cessation, and addiction.

CONTACT:

MURALI GOPALAKRISHNAN, PhD
Phone: (847) 938-4738
E-mail: murali.gopalakrishnan@abbott.com
Web site: www.cmpinc.net/nachr2007
MATT BURDETSKY
Phone: (703) 536-4993
E-mail: matt@cmpinc.net

THURSDAY, NOV. 1 — FRIDAY, NOV. 2

Dynamical Neuroscience XV: 3rd Annual Computational Cognitive Neuroscience Conference

San Diego Convention Center,
Symposium 26A, Poster Session 25A
Thursday, Nov. 1
1:30 – 9 p.m.

Friday, Nov. 2
7 a.m. – 6 p.m.

Cognitive neuroscience has flourished due to advances using multiple methodologies such as anatomy, physiology, behavior, and imaging. Computational cognitive neuroscience provides strong theoretical neuroscience-based computational models that can relate the different levels of analysis between biological mechanisms and cognitive function, moving beyond basic brain/behavior correlations.

The meeting will focus on research intersecting neuroscience, cognitive science, mathematical analysis, and computational modeling, to understand cognitive functions such as perception, attention, learning and memory, language, and higher-level cognitive functions, to create a forum for modelers and non-modelers to interact.

CONTACT:

THOMAS HAZY, MD
Phone: (303) 883-1009
E-mail: thazy@colorado.edu
Web site: www.ccnconference.org
DENNIS GLANZMAN, PHD
E-mail: glanzman@helix.nih.gov

J.B. Johnston Club/Karger Workshop

San Diego Marriott Gaslamp Quarter
Thursday, Nov. 1 — Friday, Nov. 2
8 a.m. – 5 p.m.

The J.B. Johnston Club (JBJC) is an international organization of researchers in comparative, evolutionary and behavioral neuroscience. Hans Hofmann and Caroly Shumway are organizing the Karger Workshop, entitled “Neurobiological Lessons Learned from Comparative Studies: Evolutionary Forces Shaping Brain and Behavior.” The regular JBJC meeting will consist of short presentations on a variety of subjects. Information about the meeting, including abstract submission, should be directed to Blinda McClelland.

CONTACT:

BLINDA MCCLELLAND, PHD
Phone: (512) 450-1622
E-mail: mclelland@mail.utexas.edu
Web site: www.jbjclub.org

Barrels XX: The 20th Annual Barrels Meeting

Museum of Contemporary Art
San Diego - La Jolla Campus
Thursday, Nov. 1 — Friday, Nov. 2
8 a.m. – 5:30 p.m.

Speakers: E. Callaway, The Salk Institute; B. Cauli, CNRS; E. Lein, Allen Brain Institute; H.C. Lu, Baylor University; K. Fox, Cardiff University; D. Contreras, University of Pennsylvania.; A. Barth, CMU; Y. Nakagawa, University of Minnesota
The 20th Annual Barrels Meeting highlights the latest advances in this rapidly growing field. The Barrels meeting annually focuses on the development, anatomy, physiology, and behavior of the rodent whisker-to-barrel pathway. Speakers utilize diverse molecular, physiological, and computational techniques to understand the sensory processing and motor commands that are involved with the rodent mystacial vibrissae. This year’s meeting will be organized around three themes: (1) the role of cortical inhibition, (2) the development of cortical maps, and (3) thalamocortical plasticity.

CONTACT:

JOSHUA BRUMBERG, PHD
Phone: (718) 997-3541
Fax: (718) 997-3257
E-mail: joshua.brumberg@qc.cuny.edu
Web site: www.regonline.com/barrelsXX

National Parkinson Foundation 10th International Symposium on Parkinson Research

San Diego Marriott Hotel & Marina, Marina Ballroom G, F
Thursday, Nov. 1 — Friday, Nov. 2
8:30 a.m. – 6 p.m.

Organizers: A. Deutch and F. Hefti
Speakers: R. Llinas, R. Albin, M. Kinoshita, R. Malenka, A. Young, M. Nicoletis, M. Chesselet, M. Okun, P. Sonsalla, T. Sudhof, D. Sulzer, M. Farrer, T. Dawson, A. Graybiel, W. Weiner, J. Stoessl, F. Hefti, and others
This symposium focuses on presenting the latest developments in both basic and clinical sciences relating to Parkinson’s disease and related neurodegenerative disorders. Invited speakers are world-renowned experts.

In addition, a panel of speakers will be selected from junior investigators (including postdoctoral fellows, residents, and junior faculty) who submit abstracts. Abstracts for poster presentations will be accepted until August 31. Info can be obtained and abstracts submitted to Karen Hamilton.

CONTACT:

KAY HOUGHTON
Phone: (305) 243-8145
E-mail: khoughton@parkinson.org
Web site: www.parkinson.org

The 5th Annual Neuron Satellite Meeting: Neurons on the Map

Weaver Center at the Institute of the Americas, University of California, San Diego Campus
Thursday, Nov. 1 — Friday, Nov. 2
8:30 a.m. – 8:30 p.m.

Organizers: The Editors of *Neuron*, K. Brose, K. Dickson, M. LeMasurier, B. Mattson, C. Yokoyama
The 5th annual Neuron satellite meeting will bring together a panel of leading neuroscientists, speaking on a range of topics related to the development and function of representational maps in the nervous system. In addition to the talks, a poster session will provide an opportunity for students and postdoctoral fellows to present their work.

CONTACT:

HANNAH GRIFFITHS
Phone: (44-18) 6584-3089
Fax: (44-18) 6584-3958
E-mail: h.griffiths@elsevier.com
Web site: www.neuron-meeting.com

Molecular and Cellular Cognition Meeting

San Diego Convention Center, Poster Session 1B
Thursday, Nov. 1
6:30 – 9:30 p.m.

San Diego Convention Center, Symposium 33C
Friday, Nov. 2
9 a.m. – 6 p.m.

Speakers: Shige Itohara, Todd Sacktor, Kelsey Martin, Scott Small, Ted Abel, Dan Storm, Isabelle Mansuy, and Alcino Silva
Molecular and cellular tools are helping to develop cross-disciplinary explanations of complex behavior. The meeting will survey recent discoveries in the new field of molecular and cellular cognition. There will be a “wine and cheese” poster session and a symposium. Several of the symposium speakers will be chosen from submitted abstracts. Registration is free, but required.

CONTACT:

FELECIA HESTER
 Phone: (205) 934-6433
 Fax: (205) 934-6571
 E-mail: office@molcellcog.org
 Web site: www.molcellcog.org
 DAVID SWEATT, PhD
 Phone: (205) 975-5196
 E-mail: office@molcellcog.org
 Web site: www.molcellcog.org

FRIDAY, NOV. 2

Developments in Neural Probe Technologies and Applications

San Diego Convention Center, Room 22
 Friday, Nov. 2
 7:15 a.m. – 5:15 p.m.

This symposium highlights recent and ongoing scientific and engineering advances in neural probe technologies and applications. It brings together top-level scientists and engineers to report on their groups' progress in understanding network and system function, biocompatibility, neural ensemble coding, neural interfaces, and advances in probe technologies for recording, stimulation, chemical sensing, and drug delivery.

The registration fee of \$95 includes the morning and afternoon sessions, and a continental breakfast and lunch. Students and postdoctoral scientists are especially encouraged to attend and will be provided a reduced registration fee. To register, please contact Vera Williams at CNCT-Nov07@umich.edu.

CONTACT:

DARYL KIPKE, PhD
 Phone: (734) 764-3716
 Fax: (734) 647-4834
 E-mail: dkipke@umich.edu
 Web site: cnct.engin.umich.edu
 WILLIAM SHAIN, PhD
 Phone: (518) 473-3630
 E-mail: shain@wadsworth.org

CNS Drug Delivery: Theory to Practice

San Diego Convention Center, Room 29D
 Friday, Nov. 2
 7:30 a.m. – 7:30 p.m.

As potential therapies for many neurological disorders and pain have evolved, the direct delivery of compounds to the central nervous system (CNS) has become an increasingly important treatment necessity. The goal of

this session is to provide a comprehensive review of theoretical and practical applications of CNS drug delivery. Information on intrathecal, intracerebroventricular, and intraparenchymal delivery of small molecule drugs, proteins, antibodies, viral vector, and cells will be discussed with an emphasis on large animal studies. In addition to presentations on specific potential therapeutic interventions, topics will include mathematical modeling, pharmacokinetic challenges, histopathological evaluation, and use of MRI with surrogate markers to examine real-time drug distribution.

Dr. Yaksh would like to invite you to submit an abstract for the SFN Drug Delivery Satellite Conference to be held November 2, 2007, in San Diego, California.

"To submit an abstract please send a word file composed with 1.0 in margins, 12 pt Arial, not to exceed 500 words and using the following format:

SAMPLE ABSTRACT

Erratic brain diffusion in the nine banded armadillo. Yaksh, T.L. and Allen J.A. Department of Anesthesiology, UCSD, LaJolla, CA and Medtronic Inc. Minneapolis Mn. It has been demonstrated that the nine banded armadillo has a cerebral metabolic rate equivalent to a bag of potato chips. In the absence of discernable brain activity, we sought to determine whether drugs delivered into the lumbar intrathecal space or cerebral ventricles would..... (not to exceed 500 words). (Supported by NIH DA02110).

Please submit your abstract directly to Dr. Tony Yaksh at tyaksh@ucsd.edu no later than Thursday, October 25th, 2007 by noon (PST).

CONTACT:

JEFF ALLEN, PhD
 Phone: (763) 514-9696
 Fax: (763) 514-9724
 E-mail: jeffrey.w.allen@medtronic.com
 TONY YAKSH, PhD
 Phone: (619) 543-3597
 E-mail: tyaksh@ucsd.edu

NIDA Mini-Convention: Frontiers in Addiction Research

San Diego Convention Center, Symposium Room 6C, Poster Session Room 6D
 Friday, Nov. 2
 8 a.m. – 6 p.m.

The NIDA Mini-Convention presents recent findings in the neurobiology of addiction. Details are under events' separate listings.

- 8 a.m. Welcome: N. Volkow, MD, Director, NIDA
- 8:15 a.m. Synaptic Plasticity and Drug Addiction
- 9:45 a.m. Keynote Speech - Jacob P. Waletzky Memorial Awardee
- 10:45 a.m. Heteromerization of G-Protein-Coupled Receptors
- 12:30 p.m. Early Career Investigators Poster Session
- 2:45 p.m. Glial Cells and Addiction
- 4 p.m. Henri Begleiter Memorial Symposium w/NIAAA

Pre-register online at the "Frontiers in Addiction Research" Web site.

CONTACT:

RITA LIU, PhD
 Phone: (301) 435-1388
 E-mail: rliu@nida.nih.gov
 Web site: www.sei2003.com/nida/frontiers2007
 CATHERINE SASEK, PhD
 Phone: (301) 594-6312
 E-mail: csasek@nida.nih.gov

Tucker-Davis Symposium on Advances and Progress in Auditory Neurophysiology (APAN)

San Diego Convention Center, 1B
 Friday, Nov. 2
 8 a.m. – 6 p.m.

This annual symposium is to facilitate the growth of auditory neurophysiology research in awake and behaving preparations, provide an opportunity for researchers to discuss issues of common interest, and share their latest findings. Those interested in giving an oral or poster presentation must submit an abstract (~250 words) by July 1. We encourage the submission of abstracts by newly established investigators, postdoctoral and graduate students.

Registration fees: Advance (by Sept. 1): \$50 (faculty), \$20 (students). On-site: \$70 (faculty), \$40 (students).

For abstract submission, registration and scientific programs, please visit the symposium's Web site at www.apan.jhu.edu.

CONTACT:

XIAOQIN WANG, PhD
Phone: (410) 614-4547
Fax: (410) 502-2826
E-mail: xiaoqin.wang@jhu.edu
Web site: www.bme.jhu.edu/~xwang

YALE COHEN, PhD
Phone: (603) 646-0532
E-mail: yec@dartmouth.edu
Web site: www.dartmouth.edu/~psych/faculty/cohen.html

NIDA Mini-Convention Symposium 1: Neuronal Adaptations and Counter Adaptations

San Diego Convention Center, Room 6C
Friday, Nov. 2
8:15 – 9:45 a.m.

Chair: S. Volman

Speakers: R. Malenka, L.J. Chandler, L. Role
Long-lasting changes in neuron excitability and synaptic function have profound effects on neural information processing and behavior. For substance abuse, unraveling the causes and consequences of such changes is complex because adaptations observed after exposure to drugs or alcohol may be produced directly by drug pharmacology, the result of engaging brain systems involved in reward learning, or compensatory, homeostatic responses. This symposium will present research on cellular mechanisms that regulate neural circuit function of relevance to addiction.

This symposium is part of NIDA's mini-convention, "Frontiers in Addiction Research." Space is limited. Pre-register online at the "Frontiers in Addiction Research" Web site.

CONTACT:

SUSAN VOLMAN, PhD
Phone: (301) 435-1315
E-mail: svolman@nida.nih.gov
Web site: www.sei2003.com/nida/frontiers2007

ISDP Mini-Convention: Epigenetics and Developmental Processes

Catamaran Resort Hotel San Diego, CA
Friday, Nov. 2
8:30 a.m. – 6:30 p.m.

All behavior and its underlying mechanisms are dependent on both evolutionary and developmental history. An entire day of the latest research in and techniques of developmental neuroscience will be presented by the International Society for Developmental Psychobiology. There will be poster sessions, talks, and the following special events:

Invited addresses:

- The John Wiley Distinguished Speaker: Bruce S. McEwen, PhD, "Stress Over the Lifespan: Central Role of the Brain"
- Presidential Address: Regina M. Sullivan, PhD, "The Neurobiology of Infant Attachment"

Symposia

- Epigenetics and Development
- Neurodevelopmental Consequences of Early Life Stress

CONTACT:

HARLENE HAYNE, PhD
Phone: (63-03) 479-7636
E-mail: hayne@psy.otago.ac.nz
Web site: www.oswego.edu/isdip
DAVID LEWKOWICZ, PhD
Phone: (718) 494-5302
E-mail: david.lewkowicz@fau.edu

Protein Misfolding in Alzheimer's and Parkinson's Diseases

US Grant Hotel, San Diego
Friday, Nov. 2
9 a.m. – 5 p.m.

Organizers: E. Masliah, J. Segura-Aguilar, R.M. Kostrzewa

Speakers: D. Selkoe, M. Shelanski, L. Mucke, J. Trojanowski, D. Sulzer, H. Ischiropoulos, P. Lansbury, J. Segura-Aguilar, A. Sidhu
Protein misfolding in alpha synuclein and beta-amyloid plays an important role in neurodegenerative disorders such as Alzheimer's and Parkinson's diseases. The mechanism of protein aggregation and their relationship to neurodegeneration will be discussed in two symposia: (A) Protein Misfolding and Synaptic Toxicity and (B) Alpha-Synuclein Overexpression and Neurodegeneration. This conference is in honor of the lifetime achievement of Robert Terry, MD. Limitation: 100 registrants.

CONTACT:

RICHARD KOSTRZEWA, PhD
Phone: (423) 439-6321
Fax: (423) 439-8773
E-mail: kostrzew@etsu.edu
Web site: www.NeurotoxicitySociety.org
LISA ANTONELLIS
Phone: (858) 534-6209
E-mail: lantonellis@ucsd.edu

Using NEURON to Model Nerve Cells and Networks

San Diego Convention Center, Room 16B
Friday, Nov. 2
9 a.m. – 5 p.m.

This one-day course with lectures and live demonstrations will present the principles and procedures that are involved in creating and using models of cells and networks with NEURON. We will also show how to create distributed models that take advantage of parallel hardware ranging from multiprocessor personal computers and workstation clusters to massively parallel supercomputers; speedup is almost linear with the number of processors (Migliore et al. 2006).

CONTACT:

TED CARNEVALE
Phone: (203) 494-7381
E-mail: ted.carnevale@yale.edu
Web site: www.neuron.yale.edu
MICHAEL HINES
Phone: (203) 737-4232
E-mail: michael.hines@yale.edu

New Strategies To Treat Alzheimer's Disease Neurodegeneration and Memory Loss

Hilton San Diego Gaslamp
Quarter, Santa Rosa
Friday, Nov. 2
8:30 a.m. – 6 p.m.

Speakers: DANIEL L. ALKON, MD, Blanchette Rockefeller Neurosciences Institute, US
PKC-Isozyme Activators: Synaptogenesis, Cognitive Enhancement, and Neuroprotection.

FALK FAHRENHOLZ, PhD,
Johannes Gutenberg-University, DE
Alpha-secretase activation – an approach to Alzheimer therapy

JOANNE MCLAURIN, PhD,
Professor, Centre for Research in Neurodegenerative Diseases and Department of Laboratory Medicine and Pathobiology, University of Toronto, Toronto, Canada

Cyclohexanehexol-based inhibitors of Ab-aggregation prevent and reverse Alzheimer-like features in a transgenic models of Alzheimer Disease

TREVOR W. ROBBINS, PhD,
University of Cambridge, UK

Translational hitch or false expectation? : A re-appraisal of the cholinergic hypothesis of dementia.

DALE SCHENK, PhD,
Elan Pharmaceuticals, Inc., US

A Beta Immunotherapy for the treatment of Alzheimer's Disease.

SANGRAM S. SISODIA, PhD,
Department of Neurobiology,
University of Chicago
Molecular Mechanisms of Alzheimer's Disease

RUDOLPH E. TANZI, PhD,
Director, Genetics and Aging Research Unit,
MassGeneral Institute for Neurodegenerative
Diseases; Department of Neurology,
Massachusetts General Hospital; and
Professor of Neurology (Neuroscience),
Harvard Medical School
*Genetic Clues to the Molecular Basis of
Alzheimer's Disease*

FRED VAN LEUVEN, PhD,
Katholieke Universiteit Leuven, BE
*Transgenic mice and AD therapy: novel models,
novel insights*

MOUSSA B.H. YODIM, PhD,
Technion-Israel Institute of Technology, IL
*Why Do We Need Multifunctional
Neuroprotective and Neurorestorative
Drugs For Alzheimer's Disease*

The symposium will feature state-of-the-art drugs and drug strategies to treat Alzheimer's disease (AD) neurodegeneration and reduce memory loss. The latest developments in these drug modalities will include: (1) existing drugs available today based on the "cholinergic hypothesis" for AD, (2) reduction of excitotoxicity, (3) reduction of A β ; and its oligomers with antibodies and/or vaccination strategies, (4) reduction of A β via inhibition of β ; and/or γ -secretase, (5) reduction of A β via enhancement of α -secretase, and (6) reduction of hyperphosphorylated tau. The overall objective is to present the very latest drug programs for the treatment of AD, the underlying mechanisms and rationales for these programs, and the prospects for clinical results in the near and long-term future. See Web site for speaker listings. Please register in advance to guarantee seating.

CONTACT:

DANIEL ALKON, MD
E-mail: info@brni-jhu.org
Web site: www.cmpinc.net/adther
Web site: www.brni.org

Cajal Club Board and Business Meeting

San Diego Convention Center, Room 17B
Friday, Nov. 2
10 a.m. – 1 p.m.

The Cajal Club will hold its Annual Board and Business meetings to discuss plans for the coming year. The Board Meeting is open to only the officers and board members of the Cajal Club. The Business Meeting is open to all members in good standing. New and old members are invited to attend and participate in discussions on upcoming meeting sites and potential meeting programs. President Edward G. Jones will be presiding. A light lunch will be served during the Business Meeting to all members.

CONTACT:

CHARLES RIBAK, PhD
Phone: (949) 824-5494
Fax: (949) 824-8549
E-mail: ribak@uci.edu
Web site: cajalclub.org
EDWARD JONES, MD, PhD
Phone: (530) 757-8708
E-mail: egjones@ucdavis.edu
Web site: biosci.ucdavis.edu/FacultyProfiles/Centers/CenterForNeuroscience/DisplayFacultyProfile.cfm?Re

NIDA Mini-Convention Symposium 2: Heteromerization of G-Protein-Coupled Receptors. Implications for CNS Function and Dysfunction

San Diego Convention Center, Room 6C
Friday, Nov. 2
10:45 a.m. – 12:30 p.m.

Co-Chairs: S. Ferre and D. Shurtleff
Speakers: R. Franco, S.R. George,
L. Devi, S. Ferre

During the present decade, evidence has accumulated indicating that heteromerization of neurotransmitter receptors confers functional entities which possess different biochemical characteristics with respect to the individual components of the heteromer. This symposium will update the role of dopamine, opioid, and adenosine receptor heteromers in the CNS and their implications for neuropsychiatric disorders, including drug addiction.

This symposium is part of NIDA's mini-convention, "Frontiers in Addiction Research." Space is limited. Pre-register online at the "Frontiers in Addiction Research" Web site.

CONTACT:

DAVID SHURTLEFF, PhD
Phone: (301) 443-1887
E-mail: dshurtle@mail.nih.gov
Web site: www.sei2003.com/nida/frontiers2007

NIDA Mini-Convention: Early Career Investigators Poster Session

San Diego Convention Center, Room 6D
Friday, Nov. 2
12:30 – 2:45 p.m.

Chair: Susan Volman, PhD
This poster session will showcase drug-abuse and related neuroscience research by early career investigators, and provide opportunities for young investigators to speak with mini-convention symposia participants, NIDA staff, and NIDA-supported training directors and researchers. International poster presenters are supported, in part, by IUPHAR, IBRO, INRC, CPPD, ICRS, and IDARS.

This symposium is part of NIDA's mini-convention, "Frontiers in Addiction Research." Space is limited. Pre-register online at the "Frontiers in Addiction Research" Web site.

CONTACT:

SUSAN VOLMAN, PhD
Phone: (301) 435-1315
E-mail: svolman@nida.nih.gov
Web site: www.sei2003.com/nida/frontiers2007

Advances in Computational Motor Control VI

San Diego Convention Center, Room 23A
Friday, Nov. 2
12:30 – 9:30 p.m.

Organizers: Emo Todorov and Reza Shadmehr
The goal of this symposium is to provide an annual forum for presenting the best new work in computational motor control. The program will include invited talks by Dora Angelaki and Peter Dayan, and about 12 contributed talks selected through a rigorous peer-review process. While any work related to sensorimotor function will be considered, preference will be given to theoretical advances. We encourage presentations by the researchers who were most directly involved in the work being submitted. The symposium will be supported by the NIH. Registration will be free and all presenting student-authors

will receive partial travel support. Extended abstracts can be submitted online via the conference Web site. The deadline is Sept. 1.

CONTACT:

EMO TODOROV, PhD
Phone: (858) 699-7740
Web site: www.acmc-conference.org

A Window Into Enteric Neurosciences

San Diego Convention Center, Room 16A
Friday, Nov. 2
1 – 5:30 p.m.

The American Neurogastroenterology and Motility Society (ANMS) has a new initiative to increase awareness of recent advances in neurogastroenterology and highlight opportunities for neuroscientists considering entering the field. Research areas involving the enteric nervous system (ENS) also named the “Second Brain” or “Little Brain” are rapidly growing and include enteric microcircuits, several cell types such as glia and immune cells that interact with enteric neurons and brain-gut interactions. The first SfN satellite event entitled “A Window into Enteric Neurosciences,” sponsored by the ANMS will expose neuroscientists to the field of enteric neurosciences and will cover evolving areas related to signaling involved in sensory transduction of nutrients, stress-related visceral pain and the role of endocannabinoids in the ENS, along with genes involved in the process of ENS differentiation. To view a listing of speakers please contact the organizer.

To Register for the meeting (no cost) go to: www.motilitysociety.org. The deadline for on-line registration is October 1, 2007. A reception will immediately follow the talks. If you need any further information, please contact us directly at (734) 699-1130.

CONTACT:

LORI ENNIS
E-mail: admin@motilitysociety.org
Web site: www.motilitysociety.org

Quenching the Fires of Brain Aging: Preventative Lifestyles

San Diego Convention Center, Room 7B
Friday, Nov. 2
1:30 – 5:30 p.m.

Speakers: Carol E. Greenwood, Gregory M. Cole, James A. Joseph, Elizabeth Head, Paula C. Bickford, Donald K. Ingram
As populations continue to age, identification of factors that could extend the health span has become an important scientific goal. Recent research has revealed several

methods, which could be implemented today, that could forestall and/or ameliorate major consequences of brain aging. In this Twenty-Second Annual Symposium on the Neural Basis of Behavior, the invited speakers will discuss lifestyle modifications involving nutrition and exercise and their beneficial consequences in the context of brain aging and neurodegenerative disease. No registration or fees required.

CONTACT:

MICHAEL FORSTER, PhD
Phone: (817) 735-2092
Fax: (817) 735-2091
E-mail: forsterm@hsc.unt.edu
JAMES JOSEPH, PhD
Phone: (817) 556-3178
E-mail: james.joseph@tufts.edu

NIDA Mini-Convention Symposium 3: Glial Cells and Addiction

San Diego Convention Center, Room 6C
Friday, Nov. 2
2:45 – 4:30 p.m.

Co-Chairs: D. Thomas, D. Lawrence, D.-Y. Wu
Speakers: B. Barres, P. Haydon, M. Carson, L. Watkins

Glial cells play significant roles in neural development, plasticity, neurorepair, and pain modulation, but little is known about how glial cell function is affected by substance abuse. This symposium will provide an understanding of the complex nature of glial cell function and activation; highlight new findings on glial modulation of neural circuit development, neuroplasticity, neurotoxicity, and pain; and explore potential ways that substance abuse can affect these processes.

This symposium is part of NIDA's mini-convention, “Frontiers in Addiction Research.” Space is limited. Pre-register online at the “Frontiers in Addiction Research” Web site.

CONTACT:

DAVID THOMAS, PhD
Phone: (301) 435-1313
E-mail: dthomas1@nida.nih.gov
Web site: www.sei2003.com/nida/frontiers2007

New Directions in Synaptic and Network Plasticity — A Move Away from NMDA Receptor Mediated Plasticity

San Diego Convention Center, Room 2
Friday, Nov. 2
4 – 7 p.m.

Recent evidence suggests that multiple disparate mechanisms of synaptic plastic-

ity exist throughout the mammalian CNS. Interestingly many of these emerging plastic mechanisms differ from the commonly studied NMDA-dependent forms of plasticity (LTD and LTP). This symposium will highlight these emerging areas and bring together leaders in this nascent field. Importantly, these mechanisms of plasticity are intimately involved in synapse and circuit development, sensory coordination, as well as informing us about the roles played by specific receptor systems in addiction and mental health disorders. Talks will focus on both mechanisms and consequences of these NMDA receptor independent plasticities within a number of central structures.

CONTACT:

CHRIS J. MCBAIN, PhD
Phone: (301) 402-4778
Fax: (301) 402-4777
E-mail: mcbainc@mail.nih.gov
Web site: neuroscience.nih.gov/Lab.asp?Org_ID=124
LINDA RIMMER
Phone: (44-12) 2340-0180
E-mail: lrimmer@physoc.org
Web site: www.physoc.org

NIDA Mini-Convention Symposium 4 with NIAAA - Impulsivity and Addiction: A Tribute to Henri Begleiter

San Diego Convention Center, Room 6C
Friday, Nov. 2
4:30 – 6 p.m.

Co-Chairs: T.K. Li and N. Volkow
Speakers: K. Kendler, B. Porjesz, D. Goldman
Endophenotypes are proximal to gene function and hence provide a powerful approach in uncovering genes and genetic risk factors contributing to complex behavioral phenotypes such as alcohol dependence and drug abuse. This symposium will address how some genetically influenced differences in susceptibility are unique to alcoholism (e.g. metabolic differences), while others, such as impulsivity, influence a range of related outcomes, including externalizing and mood disorders and substance abuse. This symposium is part of NIDA's mini-convention, “Frontiers in Addiction Research.” Space is limited. Pre-register online at the “Frontiers in Addiction Research” Web site.

CONTACT:

ANTONIO NORONHA, PhD
Phone: (301) 443-7722
E-mail: anoronha@mail.nih.gov
Web site: www.sei2003.com/nida/frontiers2007

Julius Axelrod Symposium

San Diego Convention Center, Room 4

Friday, Nov. 2

6:30 – 9 p.m.

NIMH, NINDS, and NIDA will co-sponsor a symposium celebrating the career of Dr. Julius Axelrod, one of the founders of modern neuropharmacology. Speakers will represent the next generation of neuropharmacologists as new investigators using state-of-the-art genetic and molecular techniques to probe function and dysfunction in the nervous system. Talks will range from signal transduction through neurotransmitter receptors and voltage gated ion channels through dopamine function in motivated behaviors. The keynote address will be given by the winner of the first annual Society for Neuroscience Julius Axelrod Prize, endowed by the Eli Lilly Foundation. Seating is limited. There is no cost to attend, but pre-registration is requested. Please register at the symposium's Web site.

CONTACT:

MATT BURDETSKY

Phone: (703) 536-4993

E-mail: matt@cmpinc.net

Web site: www.cmpinc.net/axelrod

SUSAN KOESTER, PhD

Phone: (301) 443-3563

E-mail: koesters@mail.nih.gov

SATURDAY, NOV. 3

ANDP Fall Meeting

San Diego Marriott Hotel & Marina, Manchester 1 and 2

Saturday, Nov. 3

5:30 – 7:30 p.m.

Join Association for Neuroscience Departments and Program (ANDP) members to discuss issues in training and education. New ANDP officers will be presented. A highlight of the meeting will include the presentation of the ANDP Education award to a distinguished neuroscience educator. Come learn more about neuroscience programs around North America, mingle with friends, and recognize an outstanding educator!

CONTACT:

ALISON HALL, PhD

Phone: (216) 368-6711

Fax: (216) 368-4650

E-mail: alison.hall@case.edu

CINDY BURKS

Phone: (281) 259-6737

E-mail: andp@andp.org

Web site: andp.org

g.tec Brain-Computer Interface Workshop

San Diego Convention Center, Room 27A

Saturday, Nov. 3

6:30 p.m. – 8:30 p.m.

The g.tec brain-computer interface workshop will show EEG data acquisition, real-time parameter and classification algorithms for computer control by thoughts. People will learn how to run experiments for cursor control and for spelling.

CONTACT:

CHRISTOPH GUGER, PhD

Phone: ++4372512224012

E-mail: guger@gtec.at

Web site: www.gtec.at/gtecWSNov07

Immunohistochemistry for Signal Transduction Research

San Diego Convention Center, Room 22

Saturday, Nov. 3

6:30 – 8 p.m.

Immunohistochemistry is a state-of-the-art technique that allows for the precise localization of neuronal tissue antigens. Unlike the detection of constitutively expressed antigens, immunohistochemical detection of intermittent or transiently expressed signal transduction molecules (such as phosphorylated receptors or enzymes) is technically challenging. This workshop will address two major elements associated with signal transduction immunohistochemistry: (1) antibody production and (2) the preservation of labile signal transduction antigen targets.

CONTACT:

GREGG E HICKEY, PhD

Phone: (800) 328-2400

E-mail: greggh@rndsystms.com

Publishing Your Science

San Diego Convention Center, Room 4

Saturday, Nov. 3

6:30 – 8 p.m.

An editor from the journal, *Science*, will provide tips and recommendations on writing scientific articles. The presentation will include strategies for preparing scientific manuscripts, examples of clear scientific prose, and tips on responding to reviewer comments.

CONTACT:

DARRYL WALTER

Phone: (202) 326-6776

Fax: (202) 898-7825

E-mail: dwalter@aaas.org

Web site: www.sciencecareers.org

Rehabilitation and Neurology Social

San Diego Marriott Hotel & Marina, Torrey 1, 2, and 3

Saturday, Nov. 3

6:30 – 8:30 p.m.

This 21st annual social invites attendees of the annual meeting with interest in translating neuroscience research to neurology and rehabilitation. This social event will allow Society members to meet informally and allow students and postdoctoral fellows to meet scientists who have an interest in clinical neurophysiology, neurology, and rehabilitation. A representative from NCMRR will discuss research opportunities and members will announce future meetings of interest. A cash bar and light snack will be provided. Sponsors: NCMRR, Neurology and Research Sections of the American Physical Therapy Association, American Society of Neurorehabilitation, and NeuroCom International.

CONTACT:

FAY HORAK, PhD

Phone: (503) 418-2600

Fax: (503) 418-2501

E-mail: horakf@ohsu.edu

Confocal Microscopy and Stereology: Recent Advances

San Diego Marriott Hotel & Marina, Santa Rosa

Saturday, Nov. 3

6:30 – 10 p.m.

It's increasingly necessary to combine qualitative observations with quantitation of cell number, and many reviewers now require that stereology be used. Performing stereological sampling of multiple fluorescence staining using confocal microscopy can be difficult, and investigators must consider many aspects of preparation, imaging, and sampling design to obtain reliable results. This short course presents researchers with the essential principles and common pitfalls of confocal microscopy and design-based stereology and details analytical techniques. The course has been revised this year to address implementing a confocal stereological study and advances in high throughput automated stereology. Pre-registration is required on the Web site.

CONTACT:

DANIEL PETERSON, PhD

Phone: (847) 578-3411

Fax: (847) 578-8545

E-mail: daniel.peterson@rosalindfranklin.edu

Web site: www.neurorenew.com

Cannabinoid Function in the Brain

San Diego Marriott Hotel & Marina, Solana
Saturday, Nov. 3
8 – 10 p.m.

Recent advancements in cannabinoid research show that the significance of cannabinoid signaling is widespread, affecting memory, obesity, anxiety, and neurological disease. Such advancements continue to evolve, thriving upon the collaborative efforts of a fast-growing community comprised of esteemed researchers. The first cannabinoid social meeting, entitled “Cannabinoid Function in the Brain,” held in San Diego will bring together accomplished figures in the cannabinoid field from abroad. This cannabinoid satellite event provides the opportunity to stimulate scientific interrelations amongst prominent individuals and to foster the growing interest of younger scientists that will define the future of the cannabinoid field.

CONTACT:

ROGER CACHOPE, MD, MSc
Phone: (718) 430-3406
Fax: (718) 430-3781
E-mail: rcachope@aecom.yu.edu
FAITH REYES, BSc
Phone: (206) 221-5221
E-mail: freyes@u.washington.edu

SUNDAY, NOV. 4

Allen Brain Atlas Social

San Diego Marriott Hotel & Marina, Solana
Sunday, Nov. 4
6:30 – 8 p.m.

The Allen Institute for Brain Science invites conference attendees to an informal networking forum for those interested in the Allen Brain Atlas. Learn what others are doing and find out what’s new. The Allen Brain Atlas (www.brain-map.org), the Allen Institute’s inaugural project, is a freely and publicly available genome-wide atlas of gene expression in the adult mouse brain. This event offers the opportunity to meet Allen Institute scientists, network with others in the Atlas user community, and discuss current uses and new features of the Allen Brain Atlas. A small number of computer workstations will be available to facilitate discussions among attendees. Light hors d’oeuvres will be provided.

CONTACT:

KELLY OVERLY, PhD
Phone: (206) 548-7000
E-mail: info@alleninstitute.org
Web site: www.alleninstitute.org

ASPET Neuropharmacology Mixer

San Diego Marriott Hotel & Marina,
Marina Ballroom, Salon E
Sunday, Nov. 4
6:30 – 8 p.m.

Mix it up at the Neuropharmacology Division mixer! Greet old friends, meet new ones, and network with your colleagues at the ASPET Neuropharmacology Division mixer. This popular gathering offers a social venue for neuropharmacologists and anyone else interested in neuropharmacology. Younger scientists are encouraged to attend and meet more established scientists in our field. We look forward to seeing you – bring a friend who might be interested in joining the Division. Hors d’oeuvres and a cash bar will be provided.

CONTACT:

DAVID SIBLEY, PhD
Phone: (301) 496-9316
Fax: (301) 480-3726
E-mail: sibley@helix.nih.gov
JEFF CONN, PhD
Phone: (615) 936-2478
E-mail: jeff.conn@vanderbilt.edu

Florida Social

Manchester Grand Hyatt, America’s Cup A
Sunday, Nov. 4
6:30 – 8 p.m.

Please join the Tampa Bay Area, the Miami, and the North Florida chapters for the first ever FLORIDA social! Reunite with “old” friends and colleagues, meet your peers from other Florida universities, or just drop by to see how your brain would feel in the sunshine.

CONTACT:

MARCIA N. GORDON, PhD
Phone: (813) 974-9926
E-mail: mgordon@health.usf.edu

The Michael J. Fox Foundation for Parkinson’s Research: Funding Philosophy and Grant Writing Workshop

San Diego Convention Center, Room 16B
Sunday, Nov. 4
6:30 – 8 p.m.

The Michael J. Fox Foundation (MJFF) is dedicated to finding a cure for Parkinson’s disease through an aggressively funded research agenda. Since 2000, we have funded nearly \$100 million in research directly or through partnerships that focus on supporting translational research with clear impact for Parkinson’s disease patients. This symposium

will highlight the Foundation’s research and funding philosophy, with the goal of helping applicants improve their chances for funding. MJFF research staff and external scientific advisors will be on hand to answer questions and discuss funding opportunities.

CONTACT:

TODD SHERER, PhD
Phone: (212) 509-0995 ext. 243
Fax: (212) 509-2390
E-mail: tsherer@michaeljfox.org
Web site: www.michaeljfox.org
BRIAN FISKE, PhD
Phone: (212) 509-0995 ext. 203
E-mail: bfiske@michaeljfox.org

Social on Neuroscience and Human Communication and Ingestive Systems

San Diego Marriott Hotel &
Marina, Warner Center
Sunday, Nov. 4
6:30 – 8:15 p.m.

This is a social event with an informal presentation aimed at introducing neuroscientists and new investigators, in particular, to the exciting new research directions, fundings, and employment opportunities in the fields of speech, voice, mastication, swallowing, auditory and speech perception, and language. This presents an opportunity to meet informally with others interested and working in these fields and to learn about these areas, which have exciting opportunities for research careers. A short presentation will be made by a neuroscientist working in a related field. Research priorities will be distributed by funding agencies and contact lists of laboratories in these areas of study for postdoctoral study will be available. Light snacks and a cash bar will be provided. All are welcome.

CONTACT:

CHRISTY LUDLOW, PhD
Phone: (301) 496-9366
Fax: (301) 480-0155
E-mail: ludlowc@ninds.nih.gov

Loyola University Chicago Neuroscience Institute Reception

San Diego Marriott Hotel & Marina, Torrance
Sunday, Nov. 4
6:30 – 8:30 p.m.

Please join us for the annual gathering of friends and alumni of the Neuroscience Institute, Loyola University Chicago Stritch School of Medicine.

CONTACT:

WENDY KARTJE, MD, PhD
 Phone: (708) 202-5995
 Fax: (708) 202-2703
 E-mail: wendy.kartje@med.va.gov
 PAULA GRIFFIN-ARNOLD
 Phone: (708) 216-6755
 E-mail: pgriffi@lumc.edu

Neuroscience Downunder Reception

San Diego Marriott Hotel and Marina
 Manchester Rooms 1 & 2
 Sunday, Nov. 4, 2007
 6:30 p.m. – 8:30 p.m.

The Brisbane and Melbourne (Australia) Chapters of the Society for Neuroscience cordially invite you to an Aussie Reception to highlight 'Neuroscience Downunder'. The Reception is sponsored by the School of Biomedical Sciences, the Queensland Brain Institute at the University of Queensland, Olympus Australia, GE Healthcare Life Sciences and the Howard Florey Institute (part of the Florey Neurosciences Institutes) in Melbourne, Victoria. We hope that Australians currently abroad can meet up with old acquaintances and those people interested in research in Australia can come and enjoy a few drinks and discuss the possibilities on offer.

CONTACTS:

SHAUN P. COLLIN, PhD
 Phone: +61 (07) 3365 4066
 Email: s.collin@uq.edu.au
 DAVID ADAMS, PhD
 Email: dadams@uq.edu.au
 Phone: +61 (07) 3365 2905
 JENNY GUNNENSEN, PhD
 Phone: +61 3 8344 5761
 Email: jenny.gunnensen@florey.edu.au
 HOLLY CATE PhD
 Phone: +61 3 8344 7318
 Email: holly.cate@florey.edu.au

Society for Arab Neuroscientists Social

San Diego Marriott Hotel & Marina, Pacific
 Sunday, Nov. 4
 6:30 – 8:30 p.m.

To celebrate the growing community of neuroscientists of Arab descent, the Society for Arab Neuroscientists will hold their 2nd annual meeting at Neuroscience 2007.

The group's mission is to foster scientific mentorship and collaborations between Arab neuroscientists at different levels (graduate students, postdoctoral fellows, and faculty), and to advance

neuroscience in the Arab world. This networking event is open to all. Advance RSVPs on Web site recommended.

CONTACT:

YASMINE EL-SHAMAYLEH
 Phone: (917) 478-0803
 E-mail: yasmine@arabneuroscientists.org
 Web site: www.arabneuroscientists.org
 GHANIA AIT-GHEZALA, PhD
 E-mail: ghania@arabneuroscientists.org

Specialized Neuroscience Research Program Reception (SNRP)

San Diego Convention Center, Room 3
 Sunday, Nov. 4
 6:30 – 8:30 p.m.

All Neuroscience Meeting participants are invited to the SNRP Reception. SNRP was initiated by NINDS, is supported by other neuroscience NIH institutes, and provides a program dedicated to fostering neuroscience centers of excellence at diversity institutions in the U.S. Twelve different programs are now funded, from Alaska to Puerto Rico, New York to Hawaii. SNRP spans a broad spectrum of the neurosciences, and is especially focused on translational, ethnic diversity, and health disparity issues. This reception offers opportunities to meet individual SNRP scientists, arrange collaborations, and recruit doctoral or postdoctoral fellows. Food and beverages will be served.

CONTACT:

MARY VAN MUELKEN, BS
 Phone: (907) 474-7029
 Fax: (907) 474-7827
 E-mail: fyabnp@uaf.edu
 Web site: snrp.nih.gov
 JOACHIM SPIESS, MD, PhD
 Phone: (808) 692-0892
 E-mail: spiess@salk.edu

University of Chicago Reception

San Diego Marriott Hotel & Marina,
 Marina Ballroom, Salon D
 Sunday, Nov. 4
 6:30 – 9 p.m.

The Committee on Neurobiology at the University of Chicago invites students, faculty, alumni, and friends to its fourth annual SfN social gathering. We celebrate our distinguished alumni. Snack food and drinks will be served.

CONTACT:

DIANE HALL
 Phone: (773) 702-6371
 Fax: (773) 702-1216
 E-mail: d-hall@uchicago.edu

Function of APP Gene Family Members and Clues to AD Pathogenesis: Studies from Worms to Mammals

San Diego Convention Center, Room 22
 Sunday, Nov. 4
 6:30 – 10 p.m.

Organizers: Sanjay W. Pimplikar, PhD, Lerner Research Institute, Cleveland Clinic, Cleveland, OH; Suzanne Guénette, PhD, MassGeneral Inst. Neurodegenerative Disease and Harvard Medical School, Boston, MA
 Speakers: ANGELS ALMENAR (Goldstein Lab), University of California San Diego, La Jolla, CA
Defining APP-Dependent Axonal Cargoes

SUZANNE GUÉNETTE
 MassGeneral Inst. Neurodegenerative Disease and Harvard Medical School, Boston, MA
Analysis of the Function of the APP C-terminal FE65-binding Proteins.

Stefan Kins,
 University of Heidelberg,
 Heidelberg, Germany,
Intraneuronal Traffic of the Amyloid Precursor Protein;

ORLY LAZAROV
 University of Illinois at Chicago, Chicago, IL
Amyloid Precursor Protein Metabolism and Neuronal Plasticity

CHRIS LI
 City College of the City University of New York, New York, NY
Title: Function of APL-1, a C. elegans Protein Related to Human AP P

HONGMEI LI
 (Sudhof Lab), University of Texas Southwestern Medical Center, Dallas, TX
Head or Tail? – Messages from APP mutant mice

ULRIKE MULLER
 University of Heidelberg,
 Heidelberg, Germany
Genetic dissection of APP/APLP Functions in Mice

SANJAY W. PIMPLIKAR
 Lerner research Institute, Cleveland Clinic, Cleveland, OH
Zebrafish Model System Reveals an Essential Role for APP During Embryogenesis.

HUAXI XU
 Burnham Institute for Medical Research, La Jolla, CA
Pathophysiological Functions of Alzheimer's β -amyloid precursor protein: A Potential of APP Metabolite AICD in Tumorigenesis.

Tracy Young

(Selkoe Lab), Harvard Medical School, Boston, MA

Analysis of the Developmental Roles of holoAPP in Neurite Outgrowth and Cortical Cell Migration in Rodents

HUI ZHENG

Baylor College of Medicine, Houston, TX
Title: Mechanisms of APP in Peripheral and Central Cholinergic Synapses

Amyloid Precursor Protein (APP), a cell surface protein of unclear molecular function, is intimately associated with Alzheimer's Disease (AD). Mutations in APP or presenilin, the catalytic subunit of the enzyme complex that cleaves APP to generate A β peptides, account for less than 5% of AD but are causative for the disease. An overwhelming amount of data indicates that A β peptides are likely to be the proximal cause of the disease. Nonetheless, we have no clear idea why APP is processed (which generates A β) and how the step-wise processing of APP relates to its function. APP and its related homologues APLP1 and APLP2 are expressed in most multicellular organisms. Studies from worms to mammals have implicated APP or its orthologues in neurogenesis, neuronal positioning, axon outgrowth, dendritic arborization and other brain functions. Distinct APP domains have been implicated in some of these events. The aim of this Satellite Symposium is to provide an informal platform to present data on the normal functions of the APP family proteins along the evolutionary pathway. We will attempt to distill this information into a conceptual framework and try to answer the following question: how can insights into APP-function lead to a better understanding of AD pathogenesis?

CONTACT:

SANJAY W. PIMPLIKAR, PhD
 Phone: (216) 444-9513

E-mail: pimplis@ccf.org

SUZANNE GUÉNETTE, PhD

Phone: (617) 726-3786

E-mail: guenette@helix.mgh.harvard.edu

Neuroscience in Germany XIV Social

Palm Restaurant

615 J Street

Southeast corner of 6th and J Street

Sunday, Nov. 4

6:30 – 10 p.m.

This annual social event facilitates an exchange of ideas and contacts among basic scientists and clinicians, as well as research fellows and graduate and undergraduate

students interested in German neuroscience. As in previous years, there will be an opportunity to get familiarized with recent developments in German neuroscience research. Those with an interest in establishing contacts with German neuroscientists or would like to work in a German laboratory are invited to participate. There will be a lecture by a prominent German scientist and will likely be some "job trading," as in the past. The event is sponsored by German Research and Funding Organizations. The event is open to all registrants of the Society for Neuroscience annual meeting.

CONTACT:

BERNHARD SABEL, PhD

Phone: (49-39) 1611-7100

Fax: (49-39) 1611-7103

E-mail: Bernhard.Sabel@Medizin.

Uni-Magdeburg.de

Web site: www.med.uni-

magdeburg.de/fme/institute/imp/

STEFFI MATZKE

E-mail: Steffi.Matzke@Medizin.

Uni-Magdeburg.de

SUNY Downstate Medical Center Social

San Diego Marriott Hotel &

Marina, Point Loma

Sunday, Nov. 4

6:30 – 10 p.m.

The School of Graduate Studies and its Alumni Association cordially invite alumni, students, faculty, and friends to be our guests for a social evening at the Society for Neuroscience 2007 annual meeting. Wine, beer, soft drinks, and hors d'oeuvres will be served. Join us to renew old friendships and to make new ones. Prospective students interested in our three interdepartmental PhD programs are welcome to join current students faculty and alumni to learn more about our exciting research in neural and behavioral science, molecular and cellular biology, and biomedical engineering. Our BME PhD program is administered jointly with Polytechnic University.

CONTACT:

SUSAN T SCHWARTZ-GIBLIN, PhD

Phone: (718) 270-2740

E-mail: susan.schwartz-giblin@downstate.edu

Web site: www.downstate.edu

ED THROCKMORTON

Phone: (718) 270-2739

E-mail: Ed.Throckmorton@downstate.edu

MONDAY, NOV. 5

Association of Neuroscience Departments and Programs Trainee Forum: Managing the Balancing Act Between Life and a Career in Neuroscience

San Diego Marriott Hotel & Marina,
 Marina Ballroom, Salon F

Monday, Nov. 5

11:30 a.m. – 1 p.m.

One challenge of pursuing a career in neuroscience is to balance a scientific career with other life pursuits, including family and child rearing, and/or activities such as community service. This forum will bring together neuroscientists spanning a range of stages in their careers, who will address the challenges of balancing a professional career and life, and discuss coping strategies they have used to successfully manage the balancing act. Brief presentations will be followed by interactive small group sessions and a panel discussion led by the invited participants. All interested students, postdoctoral trainees, and faculty are cordially invited to attend.

CONTACT:

MICHAEL LEHMAN, PhD

Phone: (519) 661-2111 ext. 83014

Fax: (519) 850-2906

E-mail: michael.lehman@schulich.uwo.ca

Web site: www.andp.org

FDA, NIMH and Industry Panel to Discuss Identification of the Best Genomic-Neuromarker Profiles for Brain Related Personalized Medicine

San Diego Convention Center, Room 23A

Monday, November 5

6:30 – 9:30 p.m.

Join Thomas Insel, Director NIMH; Edward Abrahams, Executive Director the Personalized Medicine Coalition, a representative of the FDA and Brain Resource International Database scientists for a discussion on the current status and future directions of the best genomic-neuromarker profiles for brain-related "personalized medicine (PM)."

The harsh reality is many treatments don't work and cause side effects in a significant percentage of patients. This is helping to drive the PM paradigm, which proactively tailors treatment to each individual's biological and psychological profile.

The symposium will focus on across scale mechanism and models (genomic, single neuron, neural network, and neuroimaging) that will help shape the optimal development and testing of these profile markers for personalized medicine.

There will be an opportunity to meet your peers, enjoy some refreshments and network with key opinion leaders in Personalized Medicine.

CONTACT:

MELISSA KARR

E-mail: melissa_karr@brainresource.com

Phone: (650) 544-5277

Web site: www.brainresource.com

MIMMA MASON

E-mail: mimma@brainresource.com

Getting Started With miRNA Analysis

San Diego Convention Center, Room 28A
Monday, Nov. 5

6:30 – 7:30 p.m.

miRNAs regulate gene expression by binding specific mRNAs and modulating their translation and stability. The hundreds of unique miRNAs expressed in humans likely affect expression of more than 50 percent of human proteins. To improve understanding of the roles miRNA play in human disease, we developed methods and reagents to isolate, detect, profile, mimic, and inhibit endogenous miRNAs. These technologies enable rigorous profiling and functional analyses of miRNAs in complex biological systems, including living mammals. Several of these tools are combined into a starter kit, enabling use of synthetic miRNA for cell transfection and subsequent analysis of miRNA function. We will go through the miRNA profiling workflow and subsequent experiments that analyze functions of differentially expressed miRNAs.

CONTACT:

ELLEN PREDIGER, PhD

Phone: (512) 721-3602

Fax: (512) 651-0201

E-mail: ellen.prediger@appliedbiosystems.com

Web site: www.ambion.com

STEVE SUCHYTA, PhD

Phone: (512) 721-3736

E-mail: Steven.Suchyta@appliedbiosystems.com

Sleep Research Society: Club Hypnos

Manchester Grand Hyatt, Cunningham AB
Monday, Nov. 5

6:30 – 8 p.m.

The Sleep Research Society invites all members in attendance at the Society for Neuroscience annual meeting in San Diego to attend the Club Hypnos reception.

CONTACT:

JOHN SLATER

Phone: (708) 273-9321

Fax: (708) 492-0943

E-mail: jslater@srsnet.org

Armenian Neuroscientist Social

San Diego Convention Center, Room 3

Monday, Nov. 5

6:30 – 8:30 p.m.

This purely social event will be the second annual meeting of Armenian neuroscientists. The purpose of this social is to provide an informal environment for Armenian neuroscientists and their friends to make new contacts and to strengthen old ones. The event is open to all conference registrants, exhibitors, and their guests.

CONTACT:

ARBI NAZARIAN, PhD

Phone: (619) 851-6263

E-mail: arbi.nazarian@yahoo.com

Chinese Neuroscientist Social

San Diego Marriott Hotel & Marina,

San Diego Ballroom, Salon C

Monday, Nov. 5

6:30 – 8:30 p.m.

The Society for Chinese Bioscientists in America (SCBA) Neuroscience Division invites Neuroscience 2007 attendees to its annual meeting social. Neuroscientists from different parts of the world and working in different areas will gather together to share their experience and advice. Mu-Ming Poo will be this year's keynote speaker. This is a great opportunity to network, meet old friends, and make new ones. Hors d'oeuvres will be offered with a cash bar during the gathering. The evening event will continue off-site with details to be posted on SCBA's Web site.

CONTACT:

YI RAO, PhD

Phone: (312) 503-6091

E-mail: y-rao@northwestern.edu

Web site: www.scba-society.org/CalendarEvents.html

JAMES ZHENG, PhD

Phone: (732) 235-5772

E-mail: zhengjq@umdj.edu

Passport to the Brain: The Delivery to and Assessment of Potential Therapeutics into the CNS

San Diego Convention Center, Room 32A

Monday, Nov. 5

6:30 – 8:30 p.m.

The blood-brain barrier (BBB) provides a natural defense against toxic and/or infective agents circulating in the blood. It is formed by tight junctions of endothelial cells that line cerebral blood vessels. While fulfilling a protective role, BBB severely limits delivery of medicines into the brain. Thus, most molecules have to take a transcellular route into the CNS, even when the majority of small molecules and nearly all proteins peptides do not cross the BBB. It is therefore essential to take proper account of the BBB in the discovery and development of new CNS therapeutics. This symposium will consider: (1) CNS drug discovery and BBB, (2) assessment of lead compound's ability to penetrate BBB, (3) in silico prediction of compound's ability to penetrate BBB, and (4) technologies to deliver drugs across BBB.

CONTACT:

MOHAMMAD S. ALAVIJEH, PhD

Phone: (44-87) 0240-5978

Fax: (44-84) 5125-9586

E-mail: mo.alavijeh@pharmidex.com

Web site: www.pharmidex.com

PETER HOFFMANN, PhD

Phone: (617) 768-6244

E-mail: Peter.Hoffmann@genzyme.com

Web site: www.genzymepharmaceuticals.com

Society for Neuroeconomics Social

San Diego Marriott Hotel &

Marina, Rancho Las Palmas

Monday, Nov. 5

6:30 – 8:30 p.m.

A purely social event for those interested in the neurobiology of decision making. Learn more about the Society for Neuroeconomics and meet your colleagues from all walks of life who are interested in this exciting new field. There will be a cash bar.

CONTACT:

ELIZABETH PHELPS, PhD

Phone: (212) 998-3904

Fax: (212) 995-4011

E-mail: liz.phelps@nyu.edu

Web site: www.neuroeconomics.org

PAUL GLIMCHER, PhD

Phone: (212) 998-3904

E-mail: glimcher@cns.nyu.edu

Speeding Up Behavioral Testing of Rodents and Zebrafish: High-Throughput Solutions, Challenges, and Perspectives

San Diego Convention Center, Room 4
Monday, Nov. 5
6:30 – 8:30 p.m.

High throughput is of critical importance in today's behavioral neuroscience research. Pharmacologists demand a minimal turn-around time when investigating the behavioral effects of CNS drug candidates, and behavioral geneticists face the challenge of selecting novel targets from numerous mutant lines. To identify a targeted phenotype or lead compound, rodents are commonly subjected to high throughput screening. Recent breakthroughs in experiment automation and bioinformatics allow HTP behavioral screening to be carried out at an unprecedented scale. At the same time, the zebrafish is becoming an increasingly popular animal model for behavioral screening. At this symposium, renowned speakers will present the state-of-the-art in automated HTP behavioral screening of rodents and zebrafish.

CONTACT:

PAIGE RODERICK
Phone: (703) 771-0440
Fax: (703) 771-0441
E-mail: paige.roderick@noldus.com
Web site: www.noldus.com

The UCLA Neuroscience Reception

San Diego Marriott Hotel & Marina,
San Diego Ballroom, Salon B
Monday, Nov. 5
6:30 – 8:30 p.m.

UCLA's Brain Research Institute and the Semel Institute for Neuroscience & Human Behavior are hosting a social gathering for members, friends, and alumni of the entire UCLA neuroscience community.

CONTACT:

LINDA MANINGER
Phone: (310) 825-5061
Fax: (310) 206-5855
E-mail: lmaninger@mednet.ucla.edu
Web site: www.bri.ucla.edu

UCSD Neurosciences Graduate Program Reception and Alumni Reunion

Manchester Grand Hyatt, Emma ABC
Monday, Nov. 5
6:30 – 8:30 p.m.

All UCSD Neurosciences alumni, current students, and faculty, are cordially invited to the UCSD Neurosciences

Graduate Program Reception. Cocktails and hors d'oeuvres to be served.

CONTACTS:

ERIN BURGOON
Phone: (858) 534-3377
E-mail: egilbert@ucsd.edu
Web site: www.neurograd.ucsd.edu
CHRISTA LUDEKING
Phone: (858) 534-7875
E-mail: cludeking@ucsd.edu

University of Minnesota Reception

Manchester Grand Hyatt, Madeleine Ballroom A, B, C, and D
Monday, Nov. 5
6:30 – 8:30 p.m.

The University of Minnesota Medical School cordially invites alumni, students, faculty, staff, and friends to our annual SfN reception. Join us to revive old contacts and make new ones.

CONTACT:

TIMOTHY EBNER, MD, PhD
Phone: (612) 626-6800
Fax: (612) 626-5009
E-mail: ebner001@umn.edu

Washington University in St. Louis Neuroscience Reception

Mister Tiki Mai Tai Lounge
Monday, Nov. 5
6:30 – 8:30 p.m.

The neuroscience community at Washington University invites you to an informal social gathering for lively company and conversation. Join us in forming and renewing friendships and collaborations between past and present professors, postdoctoral fellows, and students. Prospective graduate and postdoctoral students are also welcome to mingle and learn about current developments and future directions. Refreshments and hors d'oeuvres will be served to aid in the merriment.

CONTACT:

MENA MORALES, BS
Phone: (314) 362-8795
Fax: (314) 362-8334
E-mail: moralesme@wustl.edu

Schizophrenia Social

San Diego Convention Center, Room 17B
Monday, Nov. 5
6:30 – 9 p.m.

"Unlike most branches of medicine, psychiatry cannot give patients a simple explanation of what is wrong with them."— R. Freedman.

In terms of puzzles, disorders of thought,

emotion, and behavior are not a child's jigsaw, or even a table-sized puzzle of the Paris skyline, rather a room-sized, 3-D puzzle of — Well, it's hard to say — Looks like it might be the stars in the night sky and someone lost the box with the picture on it. But with exciting new genetic, molecular, and behavioral clues, the field is ready for seminal work by neuroscientists. Daniel Weinberger of the National Institute of Mental Health will join us to point out corners of the puzzle ripe for unraveling. Free food and drinks will be available.

CONTACT:

HAKON HEIMER
Phone: (401) 273-7299
E-mail: hakon@schizophreniaforum.org

The ALS Association Social Event

San Diego Marriott Hotel & Marina, Del Mar
Monday, Nov. 5
6:30 – 9 p.m.

Chaired by: Lucie I. Bruijn, PhD
Social event with brief presentations. Don Cleveland, PhD, UCSD; Larry Goldstein, PhD, UCSD; Sam Pfaff, PhD, The Salk Institute; Clive Svendsen, PhD, University of Wisconsin
Join us for an informal gathering of fellow neuroscientists and ALS research enthusiasts to share ideas, meet old and new friends, and discuss some of the recent advances in the field. All are welcome!

CONTACT:

LUCIE BRUIJN, PhD
NATHALIE KAYADJANIAN, PhD
E-mail: researchgrants@alsa-national.org
Web site: www.researchgrants@alsa-national.org

NMJ in Spinal Muscular Atrophy – The Chicken or The Egg?

Manchester Grand Hyatt, Annie A/B
Monday, Nov. 5
6:30 – 9:30 p.m.

There is mounting evidence that motor neuron loss in SMA is not the leading pathomechanism, with dysfunction of the neuromuscular junction marking an early acute phase of the disease. Michael Sendtner will moderate this program, which will include a discussion on the neurophysiology of the neuromuscular junction by Pico Caroni (FMI Basel). Umrao Monani (Columbia) will present disease-specific observations from SMA mouse models and Sybille Jablonka (Wuerzburg) will discuss observa-

tions of defects in excitability and alterations of growth cones in SMA-affected motoneurons. Finally, Kurt Fischbeck (NINDS) will close the meeting with a broader overview of genetics and pathology of SMA and related disorders. Refreshments will be provided.

CONTACT:

CYNTHIA JOYCE

Phone: (646) 253-7100

Fax: (212) 247-3079

E-mail: cjoyce@smafoundation.org

Web site: www.smafoundation.org

MICHAEL SENDTNER, MD

Phone: 011-49-931-201-49767

E-mail: Sendtner@mail.uni-wuerzburg.de

4th Annual Christopher Reeve Symposium: "Hot Topics in Stem Cell Biology"

Manchester Grand Hyatt, Manchester, Ballroom A-G

Monday, Nov. 5

6:30 – 10 p.m.

"Hot Topics in Stem Cell Biology 'Data Blitz' Satellite Symposium, honoring Christopher Reeve," we, of the La Jolla-based biomedical research institutes of the Southern California Stem Cell Consortium (Burnham, Salk, Scripps, UCSD) that now also comprise the San Diego Institute for Regenerative Medicine, are again sponsoring this event in conjunction with the 2007 annual meeting of the Society for Neuroscience. The format will include 10-15 very short "blitz"-like presentations by multiple investigators, each telling a single "story" and each followed by discussion/debate. There will be hot food and drinks, including beer and wine, provided throughout the evening. There is no charge and no prior registration required. It is open to all SfN attendees.

CONTACT:

SHONNA HYDE

Phone: (858) 646-3100 ext. 3388

Fax: (858) 795-5273

E-mail: shyde@burnham.org

EVAN SNYDER, MD, PhD

Phone: (858) 646-3158

E-mail: esnyder@burnham.org

ENI Young Investigator Social

Manchester Grand Hyatt, America's Cup D

Monday, Nov. 5

6:30 – 10 p.m.

ENI-NET is a network of European Neuroscience Institutes funded by the European Union and chaired by Professor Erwin Neher. The purpose of ENI-NET is to promote excellent European junior investigators in neuroscience to establish their independent laboratories and to promote collaborations between junior investigators within EU. This is an open night and many ENI-NET members from different parts of Europe will participate to interact and discuss their view about European neuroscience in general and ENI-NET in particular over a drink and some food. Young European neuroscientists who are not (yet) members of ENI-NET are particularly encouraged to attend to get a chance to meet the ENI-NET and learn more about the activities therein.

CONTACT:

OLA HERMANSON, PhD

Phone: (46-85) 248-7477

E-mail: Ola.Hermanson@ki.se

Serotonin Club Dinner

Private Yacht Charter with Hornblower Cruises

Monday, Nov. 5

6:30 – 10 p.m.

The Serotonin Club is an international organization dedicated to sharing information on research concerning this formidable neurotransmission system. The serotonin system is involved in many essential physiological functions, including sleep, feeding behavior, and psychiatric disorders. Our dinner event is planned to promote satiety and sanity. Members and nonmembers interested in learning more about this exciting field are welcome to attend. This is purely a social event with no speeches. So relax, eat, drink, and enjoy meeting new and old colleagues!! RSVP must be made by Oct. 26; no walk-ins permitted.

CONTACT:

SHERYL BECK, PhD

Phone: (215) 590-0651

Fax: (215) 590-4107

E-mail: becks@email.chop.edu

Web site: www.serotoninclub.org

DONNA O'BRIEN

Phone: (215) 590-3381

E-mail: obriend@email.chop.edu

Sigma Life Science Hospitality Red Cube Suite

San Diego Marriott Hotel & Marina Torrey 3

Monday, Nov. 5

6:30 – 10 p.m.

Sigma Life Science gladly invites you to our Red Cube Suite to enjoy appetizers and cocktails, mingle with colleagues, and unwind after a busy, productive day. Our marketing and sales staff will be available to discuss our latest technologies and your needs for innovative solutions.

CONTACT:

ANGEL GANT

Phone: (800) 521-8956 x 4227

E-mail: agant@sial.com

Web site: sigma-aldrich.com

The Rhyme and the Reason of Data Sharing

San Diego Convention Center, Room 26A

Monday, Nov. 5

6:30 – 10 p.m.

Organizers: Y. Liu, NINDS, NIH, G. Ascoli Brain research is yielding enormous and complex data sets that may be used to address new scientific questions, independent of the original projects. Talks by K. Harris (Rutgers), P. Pavlidis (British Columbia), A. Ishai (University of Zurich), R. Gilbertson (St. Jude), J. Hirsch (University of Southern California), and G. Ascoli (George Mason University) will illustrate success stories on the value added to neuroscience by reanalysis of electrophysiological, fMRI, gene expression, and morphological data. A panel discussion will address technical and social issues, e.g., why, what, when, with whom and how to share data. D. Van Essen (SfN President); T. Insel, S. Landis, N. Volkow (NIH Institute Directors); and NIH staff will participate.

CONTACT:

YUAN LIU, PhD

Phone: (301) 496-3108

Fax: (301) 402-1501

E-mail: liuyuan@ninds.nih.gov

A Neuroscience of the Incarnation

San Diego Convention Center, Room 2

Monday, Nov. 5

7 – 8:30 p.m.

At the center of the Christian faith is the belief that God became a human being. This incarnate God did not arrive as a mature adult, but experienced all the early stages of life that we also experience. This

talk considers ways in which modern neuroscience can impact our understanding of the incarnation—and how a belief in the incarnation can shape our neuroscience. Dr. Rebecca Flietstra of Point Loma Nazarene University will discuss the theological issues and how they relate to the neurosciences. The meeting welcomes all attendees of the Society for Neuroscience. To receive e-mail updates, enter your e-mail address into the mailing list database found on the Christian Neuroscience Society's Web site.

CONTACT:

THEODORE McDONALD, PhD
Phone: (360) 683-8300
E-mail: ted@a-msystems.com
Web site: www.cneuroscience.org

International Behavioral Neuroscience Society Reception

San Diego Marriott Hotel & Marina, Point Loma
Monday, Nov. 5
6:30 – 8:30 p.m.

The International Behavioral Neuroscience Society (IBNS) cordially invites SfN registrants with an interest in the relationship between brain function and behavior to attend this event and meet individuals with similar interests. This reception will also serve as a rendezvous point for current IBNS members. IBNS, founded to encourage research and education in the field of behavioral neuroscience, has 626 members from 33 different countries. Information on future meetings and membership in the Society will be available. Refreshments will be provided and a cash bar will be open.

CONTACT:

MARIANNE VAN WAGNER
Phone: (830) 796-9393
Fax: (830) 796-9394
E-mail: ibns@ibnshomepage.org
Web site: www.ibnshomepage.org

LGBT Neuroscience Social

San Diego Marriott Hotel & Marina, Torrance
Monday, Nov. 5
7 – 9 p.m.

This is the 16th annual social event for lesbian, gay, bisexual, and transgender members of the neuroscience community and their colleagues. All are welcome.

CONTACT:

KEVIN O'CONNOR, PhD
Phone: (530) 752-5304
Fax: (530) 757-8708
E-mail: knoconnor@ucdavis.edu
Web site: www.geocities.com/lgbtneuroscientist

Society for Stimulus Properties of Drugs

San Diego Convention Center, Room 22
Monday, Nov. 5
7 – 10 p.m.

Society for Stimulus Properties of Drugs will sponsor an evening paper session at Neuroscience 2007. The annual business meeting will be held prior to oral presentations of current research. In addition, undergraduate and graduate students are invited to present research posters. Open to all students and investigators interested in the stimulus properties of drugs. Light refreshments and a cash bar will be available.

CONTACT:

JOSEPH H. PORTER, PhD
Phone: (804) 828-0096
Fax: (804) 828-2237
E-mail: jporter@vcu.edu

The Grass Foundation Fellowship Program at the Marine Biological Laboratory Reception

San Diego Marriott Hotel & Marina, Green Room
Monday, Nov. 5
8 – 9:30 p.m.

The Grass Foundation has supported neuroscientists early in their careers to conduct Independent research at the Marine Biological Lab (MBL) in Woods Hole, MA, since 1951. This educational/social gathering provides the opportunity for those interested in applying for the Grass Fellowship to talk to trustees and former fellows. This session will be informal with an introduction to the program followed by a question-and-answer period. Potential applicants can then discuss the program with those present. Currently, there are over 400 Grass fellows, many of whom have gone on to make major contributions to neuroscience.

CONTACT:

JANIS C. WEEKS
Phone: (541) 346-4517
E-mail: Weeks@uoneuro.uoregon.edu
E-mail: info@grassfoundation.org

Neuroscience in Sleep and Circadian Biology DataBlitz

Manchester Grand Hyatt, Randle Ballroom, Salons A and B
Monday, Nov. 5
8 – 10 p.m.

The Sleep and Circadian DataBlitz is an opportunity for those attending the Society for Neuroscience's annual meeting to meet informally with researchers in related disci-

plines. Fast paced DataBlitz presentations (one minute, one slide) will highlight recent research developments. These presentations will be followed by an honorary, "two minute" plenary speaker presentation. Representatives from the National Center on Sleep Disorders Research and NIH Institutes will be present to discuss current research, future directions and support mechanisms. There is no charge or registration for SfN annual meeting participants. Light refreshments will be provided.

CONTACT:

MICHAEL TWERY, PhD
Phone: (301) 435-0199
E-mail: twerym@nhlbi.nih.gov
Web site: www.nhlbi.nih.gov/sleep
AL GOLDEN, MPH
Phone: (301) 435-0199
E-mail: goldenam@mail.nih.gov

TUESDAY, NOV. 6

Association of Korean Neuroscientists (AKN) Annual Reception

San Diego Convention Center, Room 3
Tuesday, Nov. 6
6:30 – 7:30 p.m.

This is an annual gathering of Korean neuroscientists from North America, Korea, and other parts of the world. An informal reception with poster presentations will be held. For details and updates, please visit the AKN Web site at www.akneuro.org. Those who are interested in displaying their posters should contact one of the organizers below.

CONTACT:

UN JUNG KANG, MD
Phone: (773) 702-6389
E-mail: unjang@uchicago.edu
Web site: www.akneuro.org
KENDALL LEE, MD, PhD
Phone: (507) 284-2816
E-mail: lee.kendall@mayo.edu

Greek Neuroscientists Social

San Diego Marriott Hotel & Marina, Point Loma
Tuesday, Nov. 6
6:30 – 7:30 p.m.

The Greek Neuroscientists Social event during the 2007 Society for Neuroscience meeting in San Diego is open to all meeting registrants, exhibitors, and their guests. This year, there will be a review presentation and discussion by Athina

Markou, PhD, Professor, Department of Psychiatry, School of Medicine, University of California, San Diego, titled "Neurobiology of Nicotine Dependence: Relevance to Depression." The evening will continue with Greek cuisine and music at the Athens Market Taverna, 109 West F Street, San Diego, CA 92101, tel: (619) 234-1955.

CONTACT:

EMMANUEL POTHOS, PhD
Phone: (617) 636-6778
Fax: (617) 636-6738
E-mail: Emmanuel.Pothos@tufts.edu
GEORGE PAXINOS, PhD
E-mail: G.Paxinos@unsw.edu.au

Selecting Effective and Potent siRNAs

San Diego Convention Center, 28A
Tuesday, Nov. 6
6:30 – 7:30 p.m.

Critical to siRNA experimental design is selection of effective, potent, specific siRNAs for silencing specific targets. We will discuss advances in intelligent siRNA design algorithms that identify more effective, potent siRNAs, and validation of these siRNAs using real-time PCR and TaqMan® Gene Expression Assays. We will introduce a tool for performing systems biology – the interactive, searchable GeneAssist™ Pathway Atlas – that graphically presents a protein's role in a cellular pathway and the interrelationships between it and other proteins involved. The atlas links directly to the most effective siRNA designs for silencing those proteins, and to TaqMan® Gene Expression Assays for detecting the RNA interference event. These tools simplify the design and execution of RNAi experiments.

CONTACT:

ELLEN PREDIGER, PhD
Phone: (512) 721-3602
Fax: (512) 651-0201
E-mail: ellen.prediger@appliedbiosystems.com
Web site: www.ambion.com
STEVE SUCHYTA, PhD
Phone: (512) 721-3736
E-mail: Steven.Suchyta@appliedbiosystems.com

Neuroscience in Europe

Manchester Grand Hyatt, Randle Ballroom, Salons A and B
Tuesday, Nov. 6
6:30 – 8 p.m.

The Federation of European Neuroscience Societies (FENS) invites all European and non-European scientists to attend the FENS social during Society for Neuroscience's 37th Annual Meeting. While offering drinks and European snacks, FENS will present and discuss opportunities on educational programs, postdoctoral, and job facilities in Europe.

CONTACT:

MEINO ALEXANDRA GIBSON
Phone: (49-30) 9406-3336
Fax: (49-30) 9406-3819
E-mail: gibson@mdc-berlin.de
Web site: www.fens.org
ANNIKA BUCHHEISTER
Phone: (49-30) 9406-3336
E-mail: a.buchheister@mdc-berlin.de

Mayo Molecular Neuroscience Program Alumni Reception

San Diego Marriott Hotel & Marina, Leucadia
Tuesday, Nov. 6
6:30 – 8:30 p.m.

All alumni and guests of the Mayo Molecular Neuroscience Program (pre-doctoral and postdoctoral trainees) are invited to attend the reception to renew old friendships and promote future collaborations. There will be an informal buffet of hors d'oeuvres and beverages.

CONTACT:

ANTHONY WINDEBANK, MD
Phone: (507) 284-1781
Fax: (507) 284-3383
E-mail: windebank.anthony@mayo.edu
JANE MEYER
Phone: (507) 284-1781
E-mail: meyer.jane@mayo.edu

Canadian Association for Neuroscience/Association Canadienne des Neurosciences Annual General Meeting

San Diego Marriott Hotel & Marina, Marina Ballroom, Salon G
Tuesday, Nov. 6
6:30 – 9 p.m.

The Canadian Association for Neuroscience/ Association Canadienne des Neurosciences invites you to this largely social event designed to bring together Canadian Neuroscientists (trainees and faculty) in an informal atmosphere to facilitate the formation of new contacts and bolster old ones. Hors d'oeuvres will be offered and a cash bar will be open throughout the evening. The business meeting will be held from approximately 7 – 7:30 p.m. Looking forward to seeing you there!

CONTACT:

JONATHAN DOSTROVSKY, PhD
Phone: (416) 978-5289
E-mail: j.dostrovsky@utoronto.ca

Club Vagus

San Diego Marriott Hotel & Marina, Seaview
Tuesday, Nov. 6
6:30 – 9 p.m.

An informal reception for researchers interested in the vagus nerve.

CONTACT:

JEFFREY S. FARRONI, PhD
Phone: (281) 727-2775