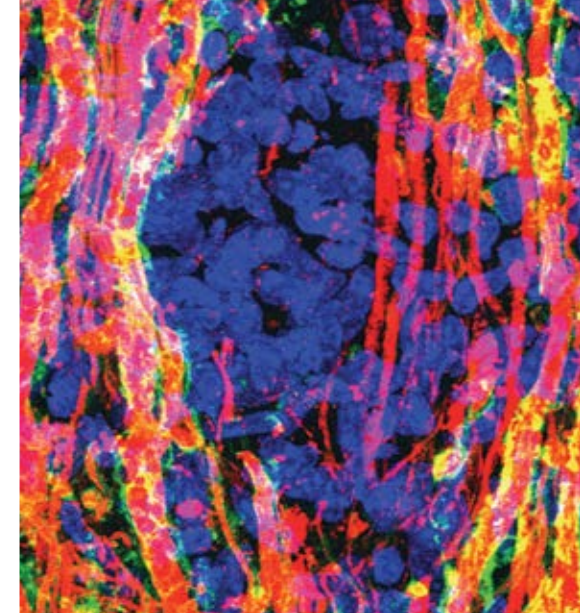


# Program at a Glance

Friday, Nov. 14	
8 a.m.–5 p.m.	<b>NEUROBIOLOGY OF DISEASE WORKSHOP</b> <a href="#">Stroke Recovery: Connecting Neuroimmunology, Regeneration, and Engineering to Restore Functional Circuits</a>
8 a.m.–6 p.m.	<b>SHORT COURSE 1</b> <a href="#">Advances in Multineuronal Monitoring of Brain Activity</a>
8:30 a.m.–6:30 p.m.	<b>SHORT COURSE 2</b> <a href="#">Advances in Brain-Scale, Automated Anatomical Techniques: Neuronal Reconstruction, Tract Tracing, and Atlasing</a>
Saturday, Nov. 15	
8–9:15 a.m.	<a href="#">Meet-the-Expert Series: Session 1</a>
9–11 a.m.	<a href="#">Careers Beyond the Bench</a>
9–11 a.m.	<a href="#">Success in Academia</a>
9:30–10:45 a.m.	<a href="#">Meet-the-Expert Series: Session 2</a>
11 a.m.–1 p.m.	<a href="#">Dialogues Between Neuroscience and Society</a>
1–2 p.m.	<a href="#">Getting the Most Out of SfN: The Annual Meeting and Beyond</a>
1–3 p.m.	<a href="#">Graduate School Fair</a>
1–3:30 p.m.	<a href="#">A Guide to Journal Publishing</a>
1–5 p.m.	<a href="#">Posters/Nanosymposia</a>
1:30–4 p.m.	<a href="#">Empirical Approaches to Neuroscience and Society Symposium</a> <b>CME</b>
1:30–4 p.m.	<a href="#">Symposia/Minisymposia</a> <b>CME</b>
2–5 p.m.	<a href="#">How to Have a Difficult Conversation</a>
3–4:30 p.m.	<b>BRAIN AWARENESS CAMPAIGN EVENT</b> <a href="#">Communicate Your Science</a>
3–5 p.m.	<a href="#">Research Careers in Industry and the Private Sector</a>
5:15–6:25 p.m.	<a href="#">Presidential Special Lecture</a> <b>CME</b>
6:30–8:30 p.m.	<a href="#">Diversity Fellows Poster Session</a>
6:30–8:30 p.m.	<a href="#">International Fellows Poster Session</a>
6:30–8:30 p.m.	<a href="#">Travel Award Recipients Poster Session</a>
7:30–9:30 p.m.	<a href="#">Career Development Topics: A Networking Event</a>



Sunday, Nov. 16	
8 a.m.–noon	<a href="#">Posters/Nanosymposia</a>
8:30–11 a.m.	<a href="#">Symposia/Minisymposia</a> <b>CME</b>
9 a.m.–1 p.m.	<a href="#">NIH/NSF Workshop</a>
9:30 a.m.–5 p.m.	<a href="#">Exhibits</a>
11:30 a.m.–12:40 p.m.	<a href="#">David Kopf Lecture on Neuroethics</a>
11:30 a.m.–1 p.m.	<b>CHAPTERS WORKSHOP</b> <a href="#">Chapter Value: Engaging Members and the Community</a>
1–3 p.m.	<a href="#">Graduate School Fair</a>
1–3 p.m.	<b>SOCIAL ISSUES ROUNDTABLE</b> <a href="#">The Neuroscience of Gaming</a>
1–5 p.m.	<a href="#">Posters/Nanosymposia</a>
1:30–4 p.m.	<a href="#">Symposia/Minisymposia</a> <b>CME</b>
2–3:30 p.m.	<a href="#">Successful Career Advancement Through Networking: Is It Who You Know?</a>
2–5 p.m.	<a href="#">Internationalizing Your Research Experience</a>
2:30–3:40 p.m.	<a href="#">Peter and Patricia Gruber Lecture</a>
5:15–6:25 p.m.	<a href="#">Presidential Special Lecture</a> <b>CME</b>
6:45–8:45 p.m.	<a href="#">SfN-Sponsored Socials</a>



Monday, Nov. 17	
8 a.m.–noon	Posters/Nanosymposia
8:30–11 a.m.	Symposia/Minisymposia <b>CME</b>
9–11 a.m.	How to Effectively Communicate Your Science to the Public
9–11 a.m.	Teaching Neuroscience: Online Learning
9:30 a.m.–5 p.m.	Exhibits
1–5 p.m.	Posters/Nanosymposia
1:30–4 p.m.	Symposia/Minisymposia <b>CME</b>
3:15–4:25 p.m.	Albert and Ellen Grass Lecture <b>CME</b>
5:15–6:25 p.m.	Presidential Special Lecture <b>CME</b>
6:45–8:45 p.m.	SfN-Sponsored Socials
Tuesday, Nov. 18	
8 a.m.–noon	Posters/Nanosymposia
8:30–11 a.m.	Symposia/Minisymposia <b>CME</b>
9:30 a.m.–5 p.m.	Exhibits
noon–2 p.m.	ANIMALS IN RESEARCH PANEL Global Ramifications of New Animal Rights Tactics

noon–2 p.m.	Celebration of Women in Neuroscience Luncheon
1–5 p.m.	Posters/Nanosymposia
1:30–4 p.m.	Symposia/Minisymposia <b>CME</b>
2:30–3:40 p.m.	History of Neuroscience Lecture
3–5 p.m.	PUBLIC ADVOCACY FORUM Implications for Science Funding in an Era of Global Brain Initiatives
5:15–6:25 p.m.	Presidential Special Lecture <b>CME</b>
6:45–7:30 p.m.	SfN Members' Business Meeting
6:45–8:45 p.m.	SfN-Sponsored Socials
9 p.m.–midnight	Graduate Student Reception
Wednesday, Nov. 19	
8 a.m.–noon	Posters/Nanosymposia
8:30–11 a.m.	Symposia/Minisymposia <b>CME</b>
9:30 a.m.–5 p.m.	Exhibits
1–5 p.m.	Posters/Nanosymposia
1:30–4 p.m.	Symposia/Minisymposia <b>CME</b>